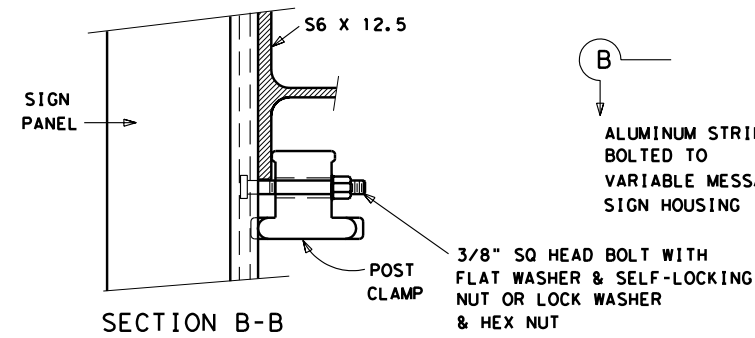
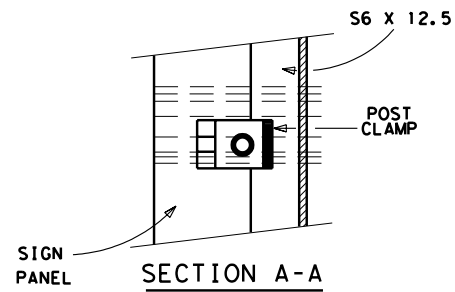


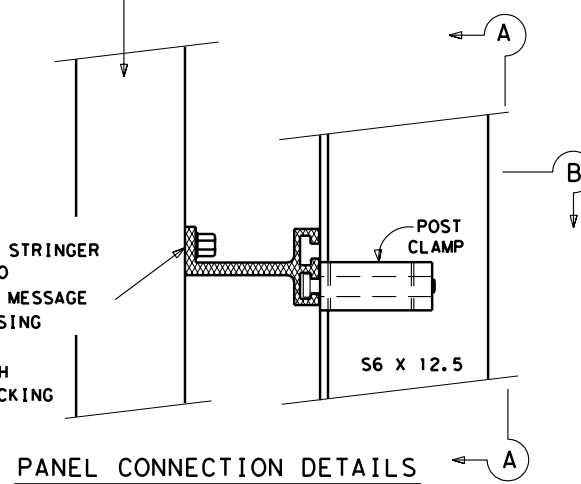
DETAIL A
METAL BEAM GUARD FENCE (BARRIER) (12 GA)



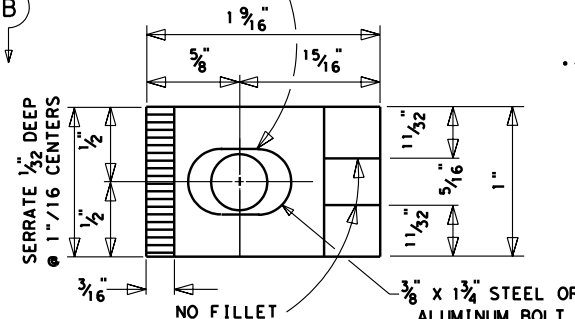
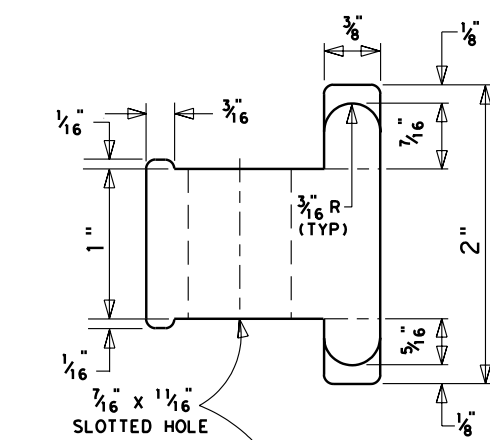
SECTION B-B



SECTION A-A

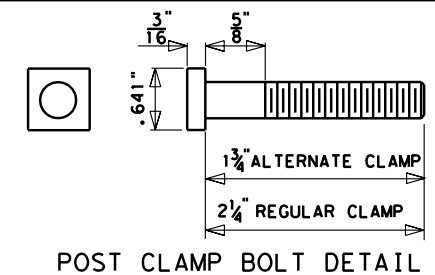


PANEL CONNECTION DETAILS

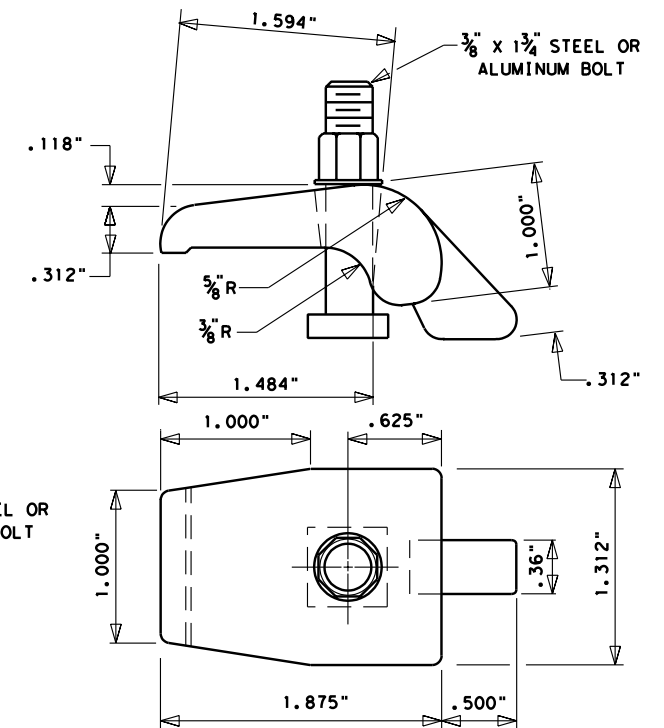


POST CLAMP DETAILS

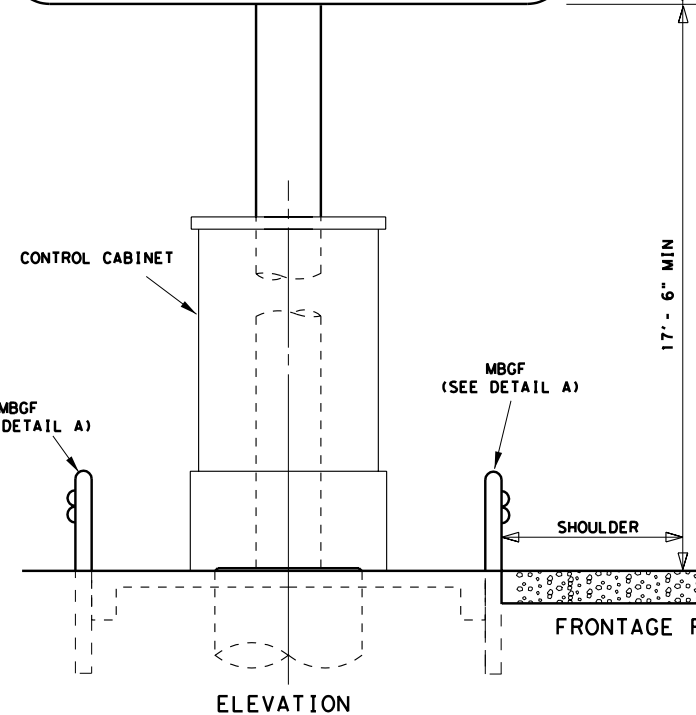
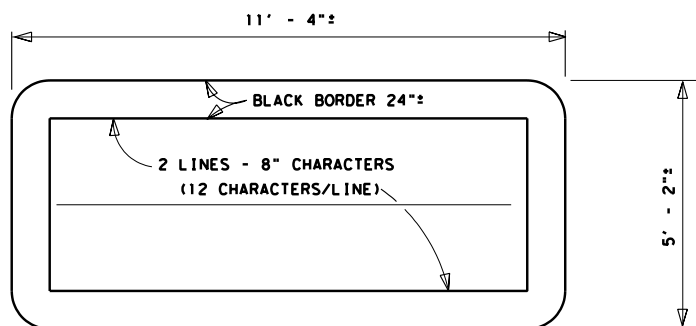
POST CLAMP TO BE CAST ALUMINUM
(173 LBS. EACH, ALLOY 356-T6)



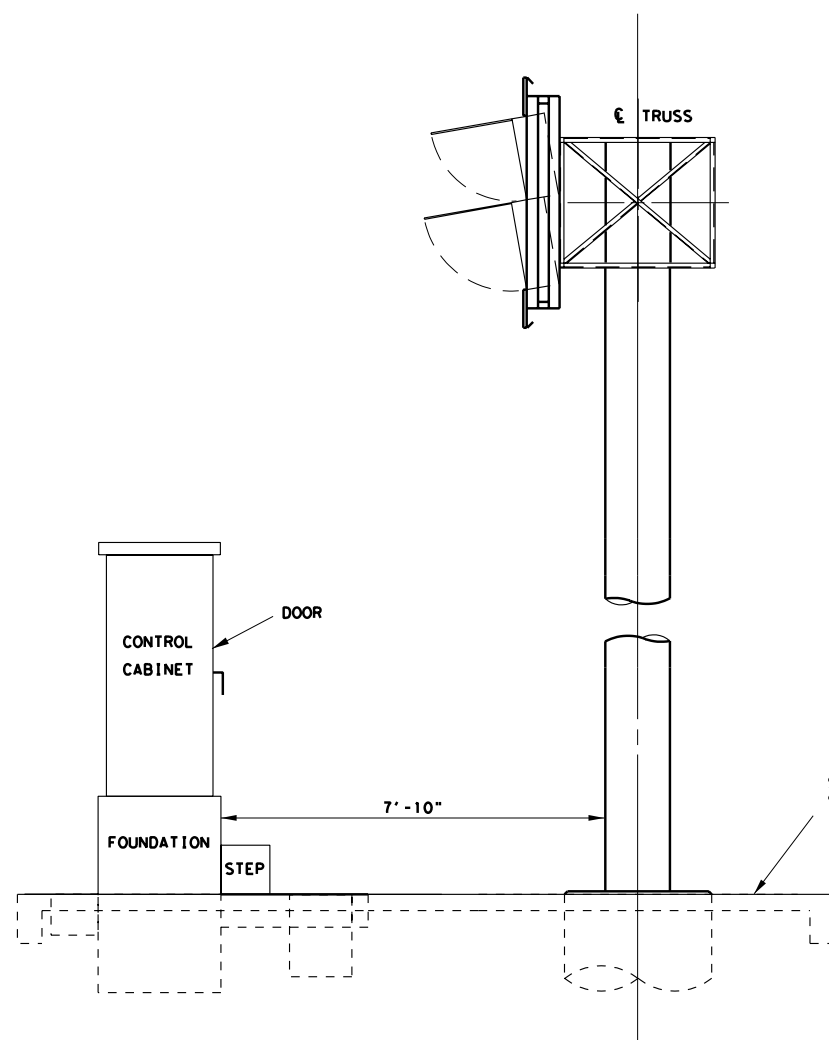
POST CLAMP BOLT DETAIL



DIMENSIONS ARE APPROXIMATE
ALTERNATE POST CLAMP DETAILS



ELEVATION



SEE "CABINET FOUNDATION DETAILS"
SHEET FOR RIPRAP DETAILS

GENERAL NOTES:

MATERIALS, FABRICATION, CONSTRUCTION AND ERECTION SHALL CONFORM WITH THE REQUIREMENTS OF THE DEPARTMENT'S STANDARD SPECIFICATIONS FOR STRUCTURAL SUPPORTS FOR HIGHWAY SIGNS, LUMINAIRES, AND TRAFFIC SIGNALS. ALL STRUCTURAL STEEL, BOLTS, NUTS AND WASHERS SHALL BE GALVANIZED AFTER FABRICATION. STRUCTURAL STEEL SHALL CONFORM WITH A.S.T.M. SPECIFICATION A-36. CLAMP BOLTS SHALL HAVE SQUARE HEADS AND HEXAGON NUTS AND CONFORM WITH A.S.T.M. SPECIFICATION A-307. DIMENSIONS SHALL BE IN ACCORDANCE WITH A.N.S.I. B 18.2.1. ALUMINUM POST CLAMPS SHALL BE CAST ALUMINUM ALLOY 356-T6. ALUMINUM BOLTS SHALL BE ALLOY 2024-T4. CONTRACTOR SHALL SUBMIT SHOP DETAILS FOR APPROVAL TO THE ENGINEER PRIOR TO ORDERING MATERIALS. THE CONTRACTOR MAY SUBMIT ALTERNATIVE CONNECTION DETAILS FOR APPROVAL WITH THE SHOP DETAILS. MBGF AS SHOWN ABOVE SHALL BE PAID FOR UNDER THE ITEM "METAL BEAM GUARD FENCE". FOR CONNECTION DETAIL SEE "VARIABLE MESSAGE SIGNS TY 1 & 2 MOUNTING DETAILS" SEE COSS-Z1 FOR GENERAL NOTES. SEE COSSD FOR TRUSS DETAILS. SEE COSSF FOR FOUNDATION DETAILS. SEE COSS-FD FOR FOUNDATION EMBEDMENT CHARTS.

VARIABLE MESSAGE SIGN TY 3
MOUNTING DETAILS

© 2004 Texas Department of Transportation

| | | |
|-------------------|-------------------------|-------------|
| FED. RD. DIV. NO. | FEDERAL AID PROJECT NO. | SHEET NO. |
| 6 | | |
| STATE | DIST. | COUNTY |
| TEXAS | SAT | BEXAR |
| CONT. | SECT. | JOB |
| | | HIGHWAY NO. |

2-5-03
7-26-01
8-23-00

| | |
|---|------------|
| LEVELS DISPLAYED | ACC: |
| 1 2 3 4 5 6 7 8 9 10 11 12 13 14 15 16 17 18 19 20 21 22 23 24 25 26 27 28 29 30 31 32 33 34 35 36 37 38 39 40 41 42 43 44 45 46 47 48 49 50 51 52 53 54 55 56 57 58 59 60 61 62 63 64 65 66 67 68 69 70 71 72 73 74 75 76 77 78 79 80 81 82 83 84 85 86 87 88 89 90 91 92 93 94 95 96 97 98 99 100 | |
| \$TIME\$ | |
| \$DATE\$ | |
| \$FILE\$ | |
| | FILE: .DGN |