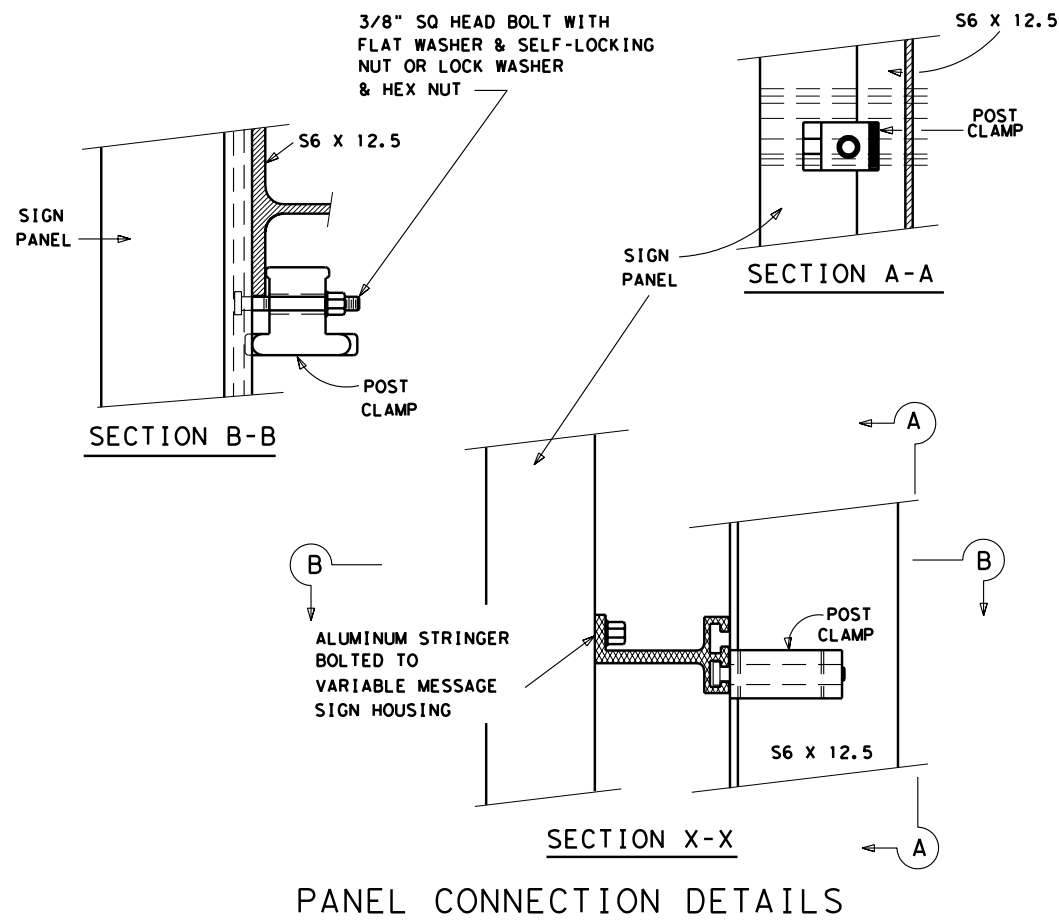
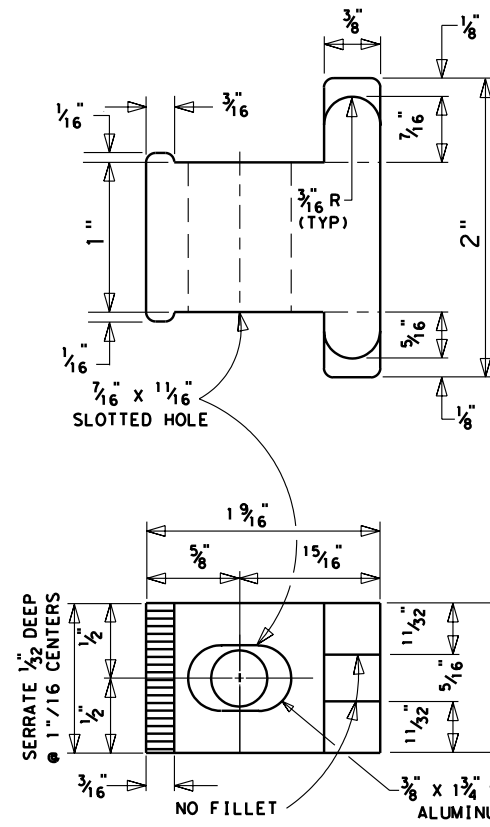


TOP CHORD
BOTTOM CHORD
SUPPORT TO TRUSS CONNECTION

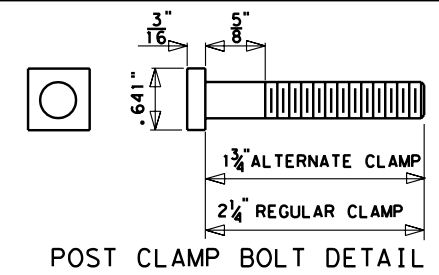


PANEL CONNECTION DETAILS

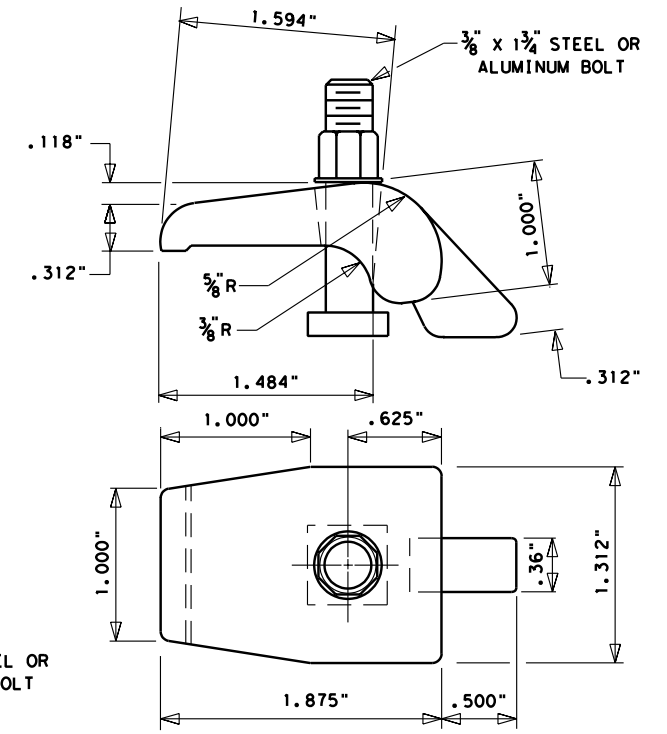


POST CLAMP DETAILS

POST CLAMP TO BE CAST ALUMINUM
(173 LBS. EACH, ALLOY 356-T6)

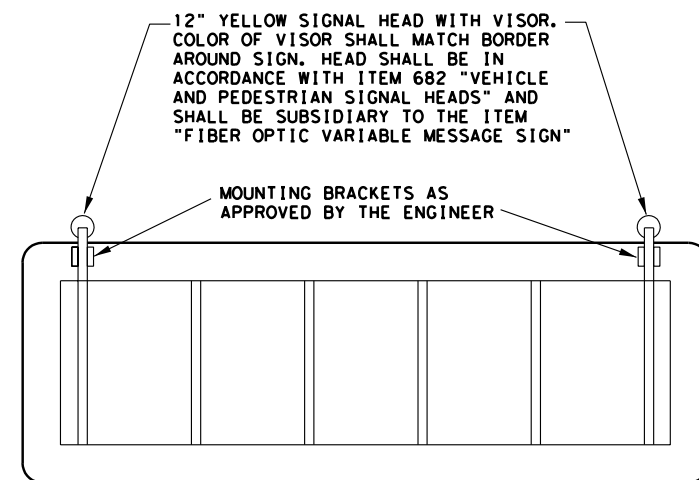


POST CLAMP BOLT DETAIL



ALTERNATE POST CLAMP DETAILS

GENERAL NOTES:
MATERIALS, FABRICATION, CONSTRUCTION AND ERECTION SHALL CONFORM WITH THE REQUIREMENTS OF THE DEPARTMENT'S STANDARD SPECIFICATIONS. ALL STRUCTURAL STEEL, BOLTS, NUTS AND WASHERS SHALL BE GALVANIZED AFTER FABRICATION. STRUCTURAL STEEL SHALL CONFORM WITH A.S.T.M. SPECIFICATION A-36. CLAMP BOLTS SHALL HAVE SQUARE HEADS AND HEXAGON NUTS AND CONFORM WITH A.S.T.M. SPECIFICATION A-307. DIMENSIONS SHALL BE IN ACCORDANCE WITH A.N.S.I. B 18.2.1 ALUMINUM POST CLAMPS SHALL BE CAST ALUMINUM ALLOY 356-T6. ALUMINUM BOLTS SHALL BE ALLOY 2024-T4.



FLASHING BEACON LOCATIONS
(VIEW OF BACK OF SIGN)

VARIABLE MESSAGE SIGNS
TYPE 1 & 2
MOUNTING DETAILS

© 2004 Texas Department of Transportation

FED. RD. DIV. NO.	FEDERAL AID PROJECT NO.		SHEET NO.
6			
STATE	DIST.	COUNTY	
TEXAS	15	BEXAR	
CONT.	SECT.	JOB	HIGHWAY NO.

REV. 1-20-00

LEVELS DISPLAYED
1 2 3 4 5 6 7 8 9 10 11 12 13 14 15 16 17 18 19 20 21 22 23 24 25 26 27 28 29 30 31 32 33 34 35 36 37 38 39 40 41 42 43 44 45 46 47 48 49 50 51 52 53 54 55 56 57 58 59 60 61 62 63
ACC:
\$TIMES\$
\$DATES\$
\$FILES\$
FILE: .DGN
FTM: \standard\csmount.dgn

VARIABLE MESSAGE SIGN

