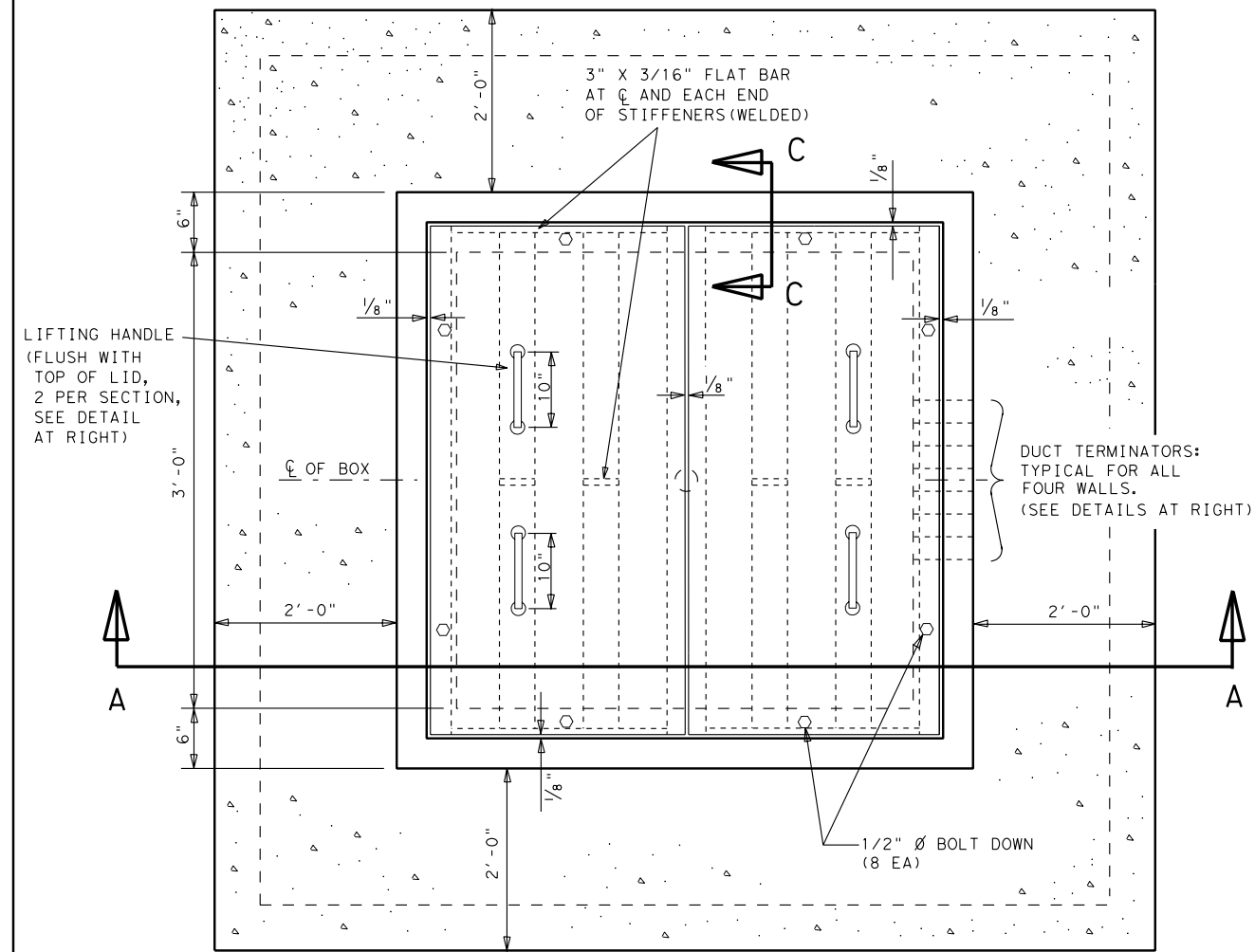
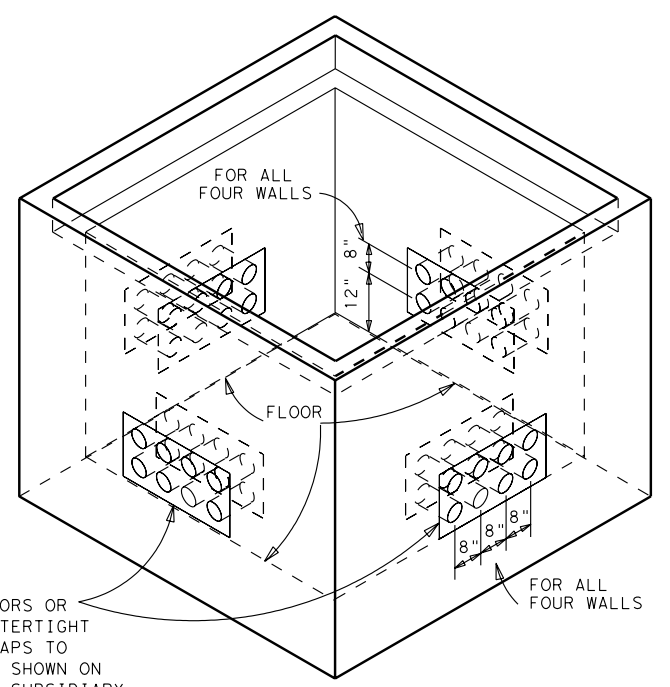


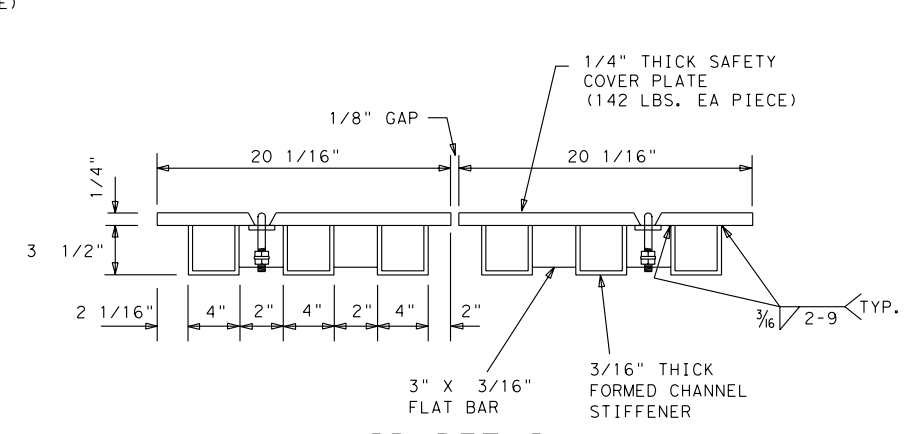
- NOTES:
1. ALL CONCRETE, EXCEPT RIPRAP APRON, SHALL BE CLASS A (4500 PSI)
 2. CONTRACTOR SHALL BE PERMITTED TO SUBMIT EQUIVALENT DESIGN FOR APPROVAL BY THE ENGINEER.
 3. ALL STRUCTURAL STEEL SHALL BE HOT DIPPED GALVANIZED
 4. ALL STRUCTURAL STEEL SHALL BE DESIGNED FOR H-15 LOADING
 5. REINFORCING STEEL SHALL BE ADJUSTED AS NEEDED FOR THE CONDUITS
 6. MANHOLE SHALL BE INSTALLED PARALLEL TO GRADE
 7. PRIOR TO SETTING, THE CONTRACTOR SHALL PROVIDE A MINIMUM OF SIX (6) INCHES OF SAND OR BASE MATERIAL SUITABLE AS A BASE TO RECEIVE MANHOLE. THE BASE MATERIAL SHALL BE COMPACTED AND GRADED LEVEL AND AT A PROPER ELEVATION TO RECEIVE THE MANHOLE IN RELATION TO THE CONDUIT GRADE OR GROUND COVER REQUIREMENTS AS DESIGNATED IN THE PLANS.
 8. CONDUIT SHALL BE ATTACHED TO 4 HOLES CLOSEST TO R.O.W. LINE.
 9. MANHOLE SHALL BE POSITIONED SO THAT DRAIN HOLE IS AT LOWEST ELEVATION.
 10. ALL LIDS SHALL BE IMPRINTED WITH THE LETTERS "TMS" IN MINIMUM 1" HIGH LETTERS.



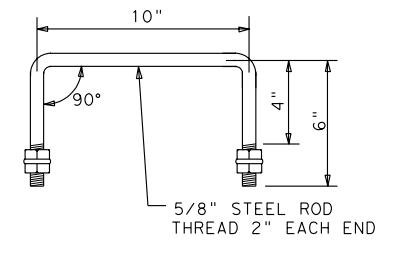
PLAN



"FORMEX" DUCT TERMINATORS OR APPROVED EQUAL WITH WATERTIGHT MEMBRANE AND LOCKING CAPS TO ACCEPT 8 CONDUIT (SIZE SHOWN ON PLANS, ALL FOUR WALLS; SUBSIDIARY TO MANHOLE)



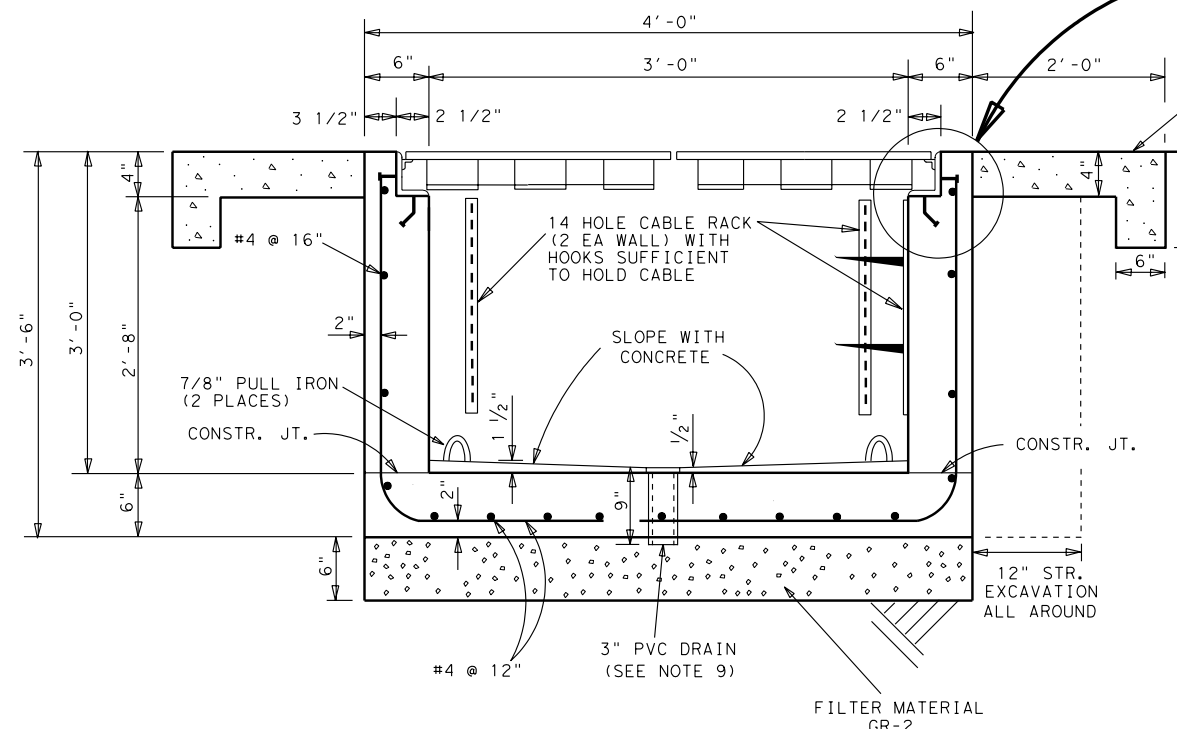
LID DETAIL



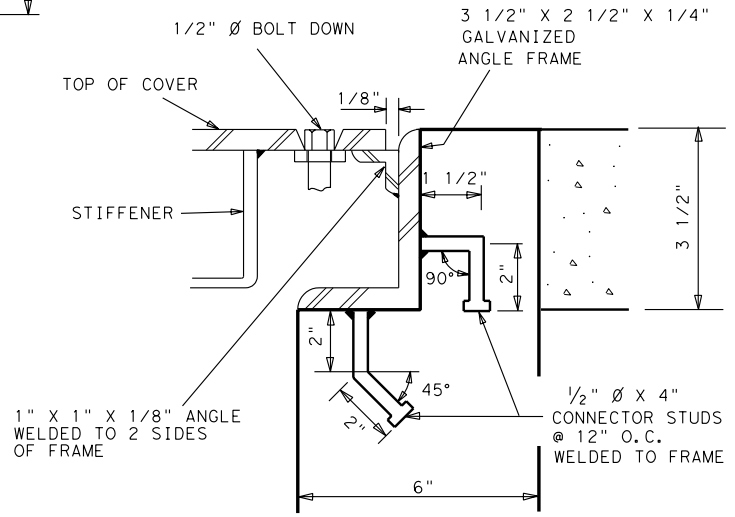
HANDLE DETAIL

SEE DETAIL B

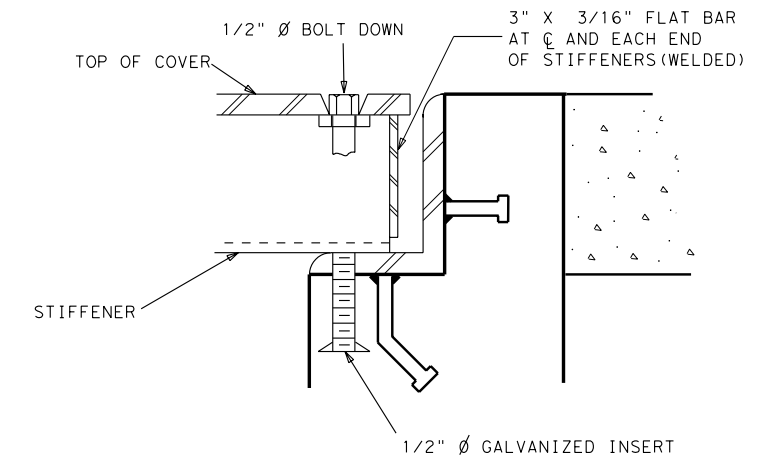
CLASS "B" RIPRAP - SUBSIDIARY TO MANHOLE - SEE ITEM 432 FOR STEEL IN RIPRAP (NOT NECESSARY FOR MANHOLES INSTALLED IN PAVEMENT AREAS)



SECTION A-A



DETAIL B



SECTION C-C

MANHOLE (COMPLETE) (JUNCTION BOX) (TY B)

© 2004 Texas Department of Transportation

- REV. 06-08-04
 REV. 01-09-01
 REV. 09-06-99
 REV. 10-15-98
 REV. 10-06-98
 REV. 03-26-98
 REV. 08-30-96

FED. RD. DIV. NO.	FEDERAL AID PROJECT NO.			SHEET NO.
6				
STATE	DIST.	COUNTY		
TEXAS	15	BEXAR		
CONT.	SECT.	JOB	HIGHWAY NO.	

LEVELS DISPLAYED

1	2	3	4	5	6	7	8	9	10	11	12	13	14	15	16
1	2	3	4	5	6	7	8	9	10	11	12	13	14	15	16

ACC: 11/11/01 11/11/01 11/11/01 11/11/01 11/11/01 11/11/01 11/11/01 11/11/01 11/11/01 11/11/01 11/11/01 11/11/01 11/11/01 11/11/01 11/11/01 11/11/01

\$TIMES \$DATES \$FILES

FILE: .DGN

FTM: \stndord\typeb_ne.dgn