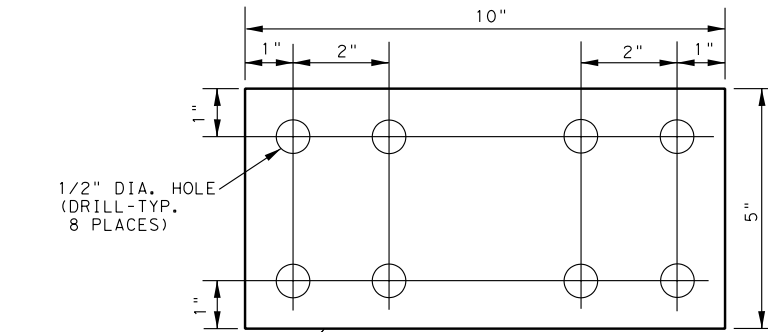
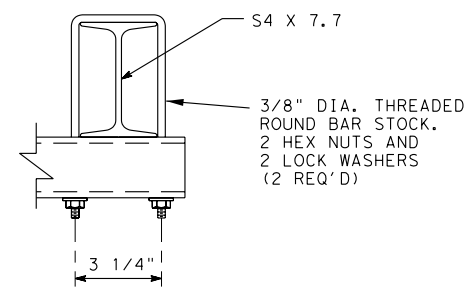


FRONT PLATE



BACK PLATE



DETAIL A

U-BOLT CONNECTION

NOTES:

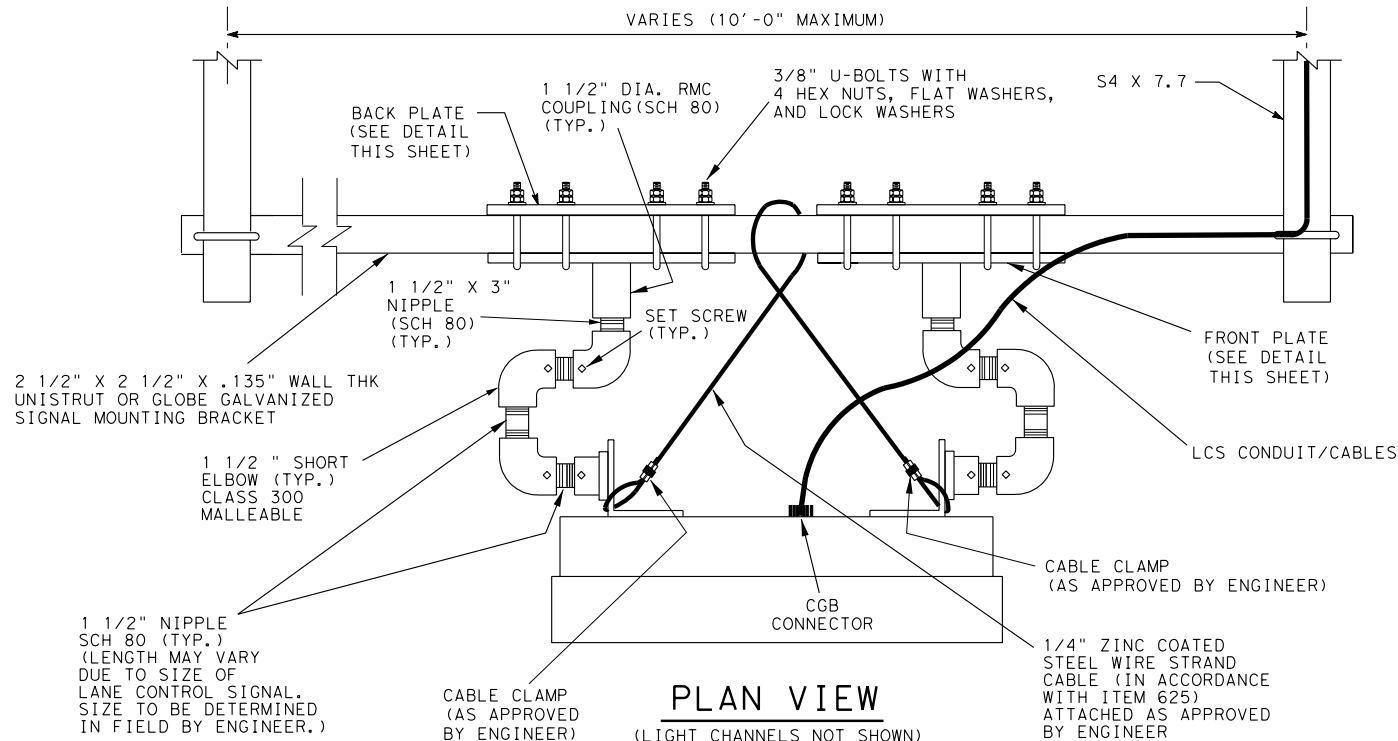
THE LANE CONTROL SIGNAL MOUNTING BRACKET, RIGID METAL CONDUIT, AND FITTINGS SHALL BE GALVANIZED IN ACCORDANCE WITH ITEM 442 "METAL FOR STRUCTURES". AFTER INSTALLATION OF LANE CONTROL SIGNAL ALL ABRASIONS TO THE ASSEMBLY SHALL BE COATED WITH TWO COATS OF ZINC RICH PAINT, AS APPROVED BY THE ENGINEER.

FABRICATION AND INSTALLATION OF LANE CONTROL SIGNAL BRACKETS AND ANY ADDITIONAL WALKWAY BRACKETS (S4 X 7.7) REQUIRED TO SUPPORT THE LANE CONTROL SIGNAL SHALL NOT BE PAID FOR DIRECTLY BUT SHALL BE CONSIDERED INCIDENTAL TO THE ITEM "LANE CONTROL SYSTEM". RIGID METAL CONDUIT, FLEXIBLE METALLIC CONDUIT, FITTINGS, CLAMPS AND ALL MISCELLANEOUS HARDWARE SHALL NOT BE PAID FOR DIRECTLY BUT SHALL BE CONSIDERED INCIDENTAL TO THE ITEM "LANE CONTROL SYSTEM".

THE CONTRACTOR SHALL FIELD VERIFY EXISTING CONDITIONS PRIOR TO FABRICATION OF THE ASSEMBLY.

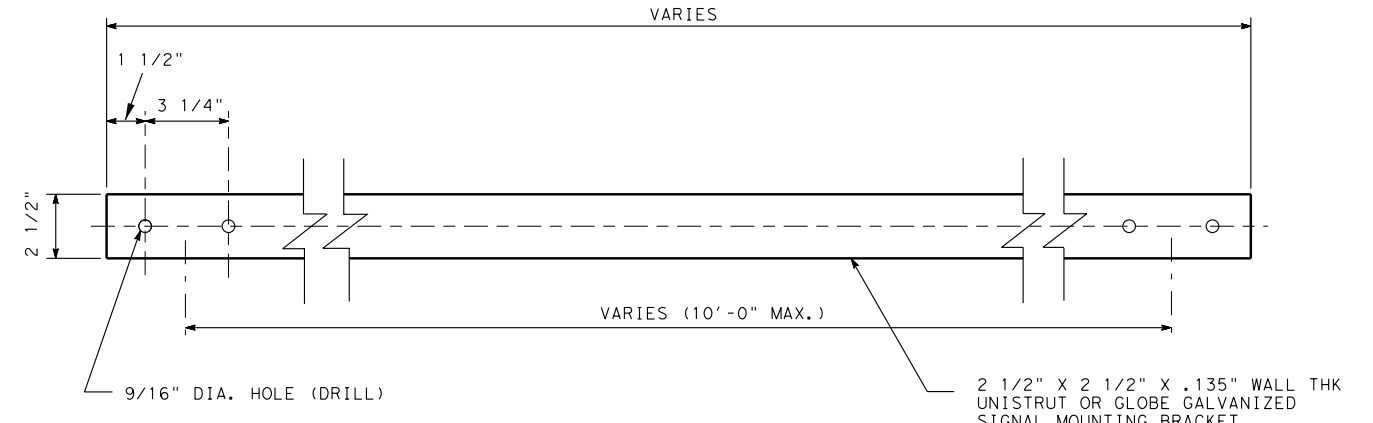
ALL LANE CONTROL SIGNALS AT EACH LOCATION SHALL BE MOUNTED AT THE SAME ELEVATION AND (1) SIGNAL CENTERED OVER EACH LANE.

ALL LCS TESTING SHALL BE DONE BETWEEN THE HOURS OF MIDNIGHT AND 5:00 AM WITH FULL CLOSURE OR AS DIRECTED BY THE ENGINEER.



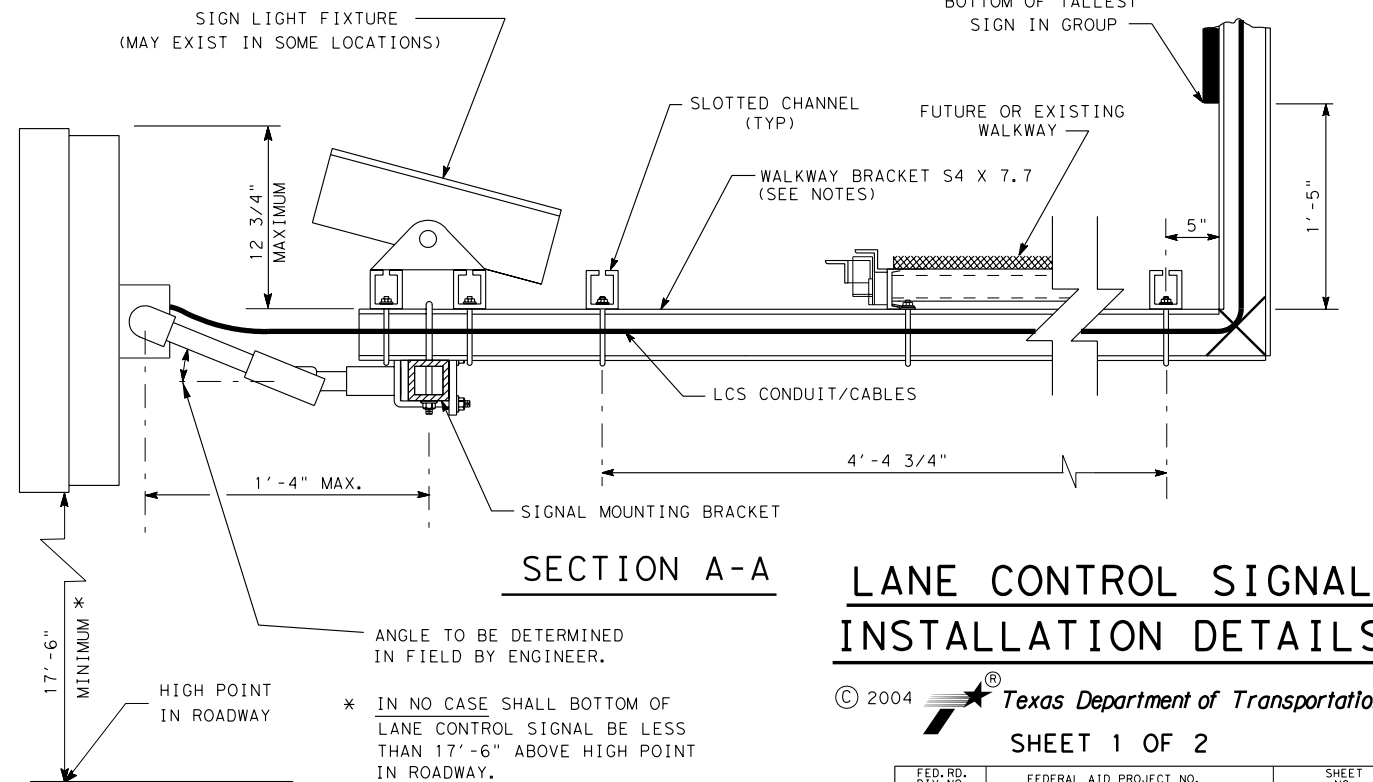
PLAN VIEW

(LIGHT CHANNELS NOT SHOWN)



SIGNAL MOUNTING BRACKET

NOTE: LENGTH OF SIGNAL MOUNTING BRACKET TO BE DETERMINED IN THE FIELD.



SECTION A-A

ANGLE TO BE DETERMINED IN FIELD BY ENGINEER.

* IN NO CASE SHALL BOTTOM OF LANE CONTROL SIGNAL BE LESS THAN 17'-6" ABOVE HIGH POINT IN ROADWAY.

LANE CONTROL SIGNAL INSTALLATION DETAILS

© 2004 Texas Department of Transportation
SHEET 1 OF 2

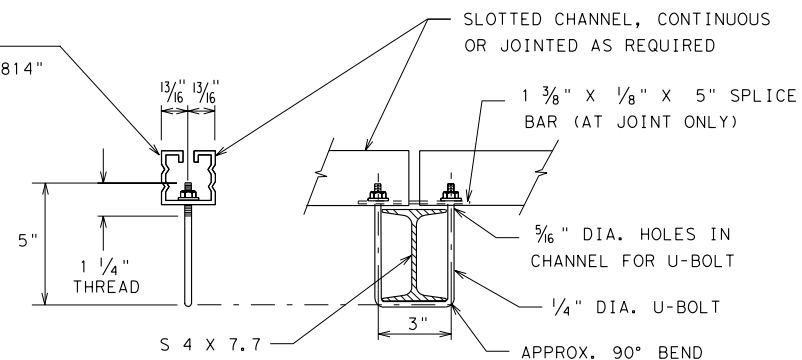
FED. RD. DIV. NO.	FEDERAL AID PROJECT NO.	SHEET NO.
6		
STATE	DIST.	COUNTY
TEXAS	15	BEXAR
CONT.	SECT.	JOB
		HIGHWAY NO.

- REV. 06-24-03
- REV. 02-25-00
- REV. 07-23-99
- REV. 12-28-98
- REV. 03-04-98
- REV. 06-10-97

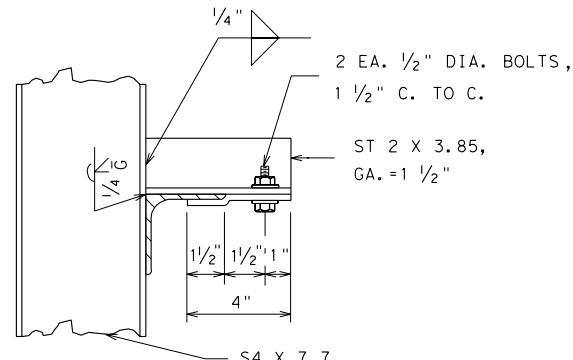
LEVELS DISPLAYED	ACC:
1 1/2	1 1/2
2 1/2	2 1/2
3 1/2	3 1/2
4 1/2	4 1/2
5 1/2	5 1/2
6 1/2	6 1/2
7 1/2	7 1/2
8 1/2	8 1/2
9 1/2	9 1/2
10 1/2	10 1/2
11 1/2	11 1/2
12 1/2	12 1/2
13 1/2	13 1/2
14 1/2	14 1/2
15 1/2	15 1/2
16 1/2	16 1/2
17 1/2	17 1/2
18 1/2	18 1/2
19 1/2	19 1/2
20 1/2	20 1/2
21 1/2	21 1/2
22 1/2	22 1/2
23 1/2	23 1/2
24 1/2	24 1/2
25 1/2	25 1/2
26 1/2	26 1/2
27 1/2	27 1/2
28 1/2	28 1/2
29 1/2	29 1/2
30 1/2	30 1/2
31 1/2	31 1/2
32 1/2	32 1/2
33 1/2	33 1/2
34 1/2	34 1/2
35 1/2	35 1/2
36 1/2	36 1/2
37 1/2	37 1/2
38 1/2	38 1/2
39 1/2	39 1/2
40 1/2	40 1/2
41 1/2	41 1/2
42 1/2	42 1/2
43 1/2	43 1/2
44 1/2	44 1/2
45 1/2	45 1/2
46 1/2	46 1/2
47 1/2	47 1/2
48 1/2	48 1/2
49 1/2	49 1/2
50 1/2	50 1/2
51 1/2	51 1/2
52 1/2	52 1/2
53 1/2	53 1/2
54 1/2	54 1/2
55 1/2	55 1/2
56 1/2	56 1/2
57 1/2	57 1/2
58 1/2	58 1/2
59 1/2	59 1/2
60 1/2	60 1/2
61 1/2	61 1/2
62 1/2	62 1/2
63 1/2	63 1/2
64 1/2	64 1/2
65 1/2	65 1/2
66 1/2	66 1/2
67 1/2	67 1/2
68 1/2	68 1/2
69 1/2	69 1/2
70 1/2	70 1/2
71 1/2	71 1/2
72 1/2	72 1/2
73 1/2	73 1/2
74 1/2	74 1/2
75 1/2	75 1/2
76 1/2	76 1/2
77 1/2	77 1/2
78 1/2	78 1/2
79 1/2	79 1/2
80 1/2	80 1/2
81 1/2	81 1/2
82 1/2	82 1/2
83 1/2	83 1/2
84 1/2	84 1/2
85 1/2	85 1/2
86 1/2	86 1/2
87 1/2	87 1/2
88 1/2	88 1/2
89 1/2	89 1/2
90 1/2	90 1/2
91 1/2	91 1/2
92 1/2	92 1/2
93 1/2	93 1/2
94 1/2	94 1/2
95 1/2	95 1/2
96 1/2	96 1/2
97 1/2	97 1/2
98 1/2	98 1/2
99 1/2	99 1/2
100 1/2	100 1/2

PLAN

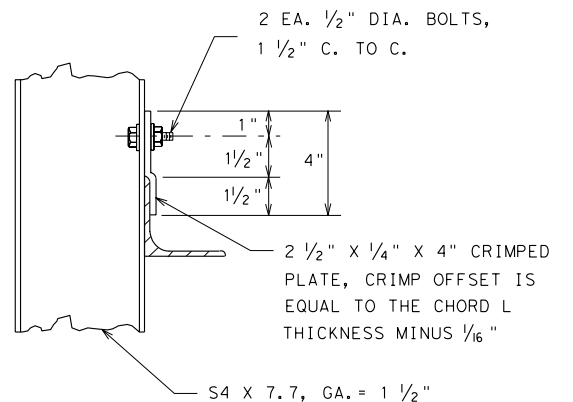
SLOTTED CHANNEL SHALL BE "UNISTRUT P2000" OR "GLOBE G-5814" OR APPROVED EQUAL.



SLOTTED CHANNEL AND MOUNTING



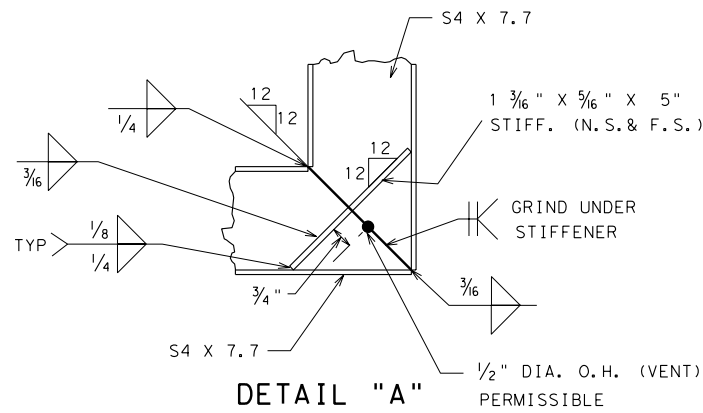
TOP CHORD



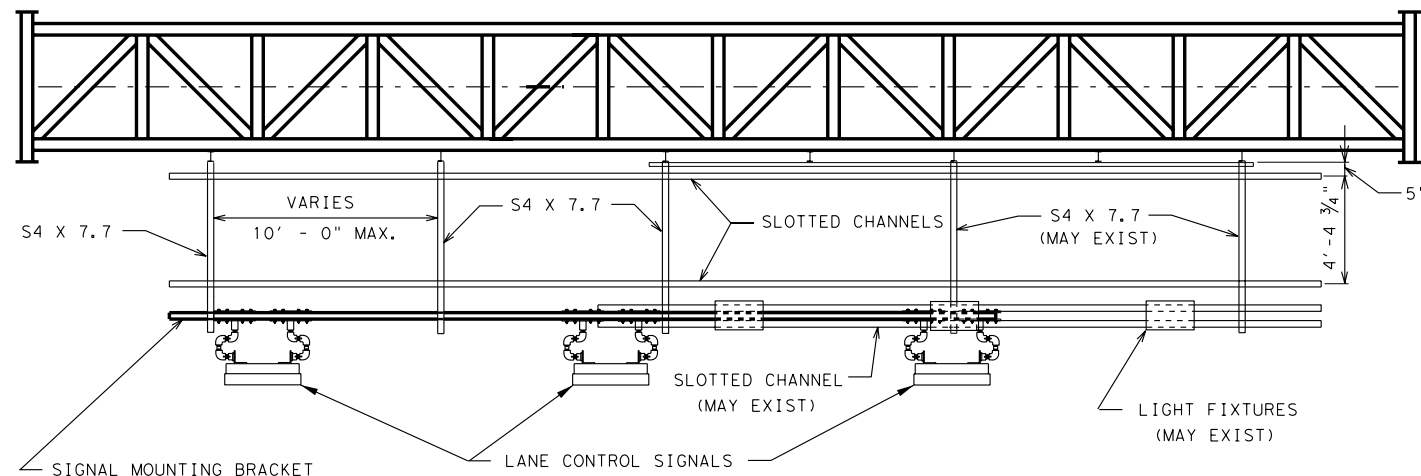
BOTTOM CHORD

SUPPORT TO TRUSS

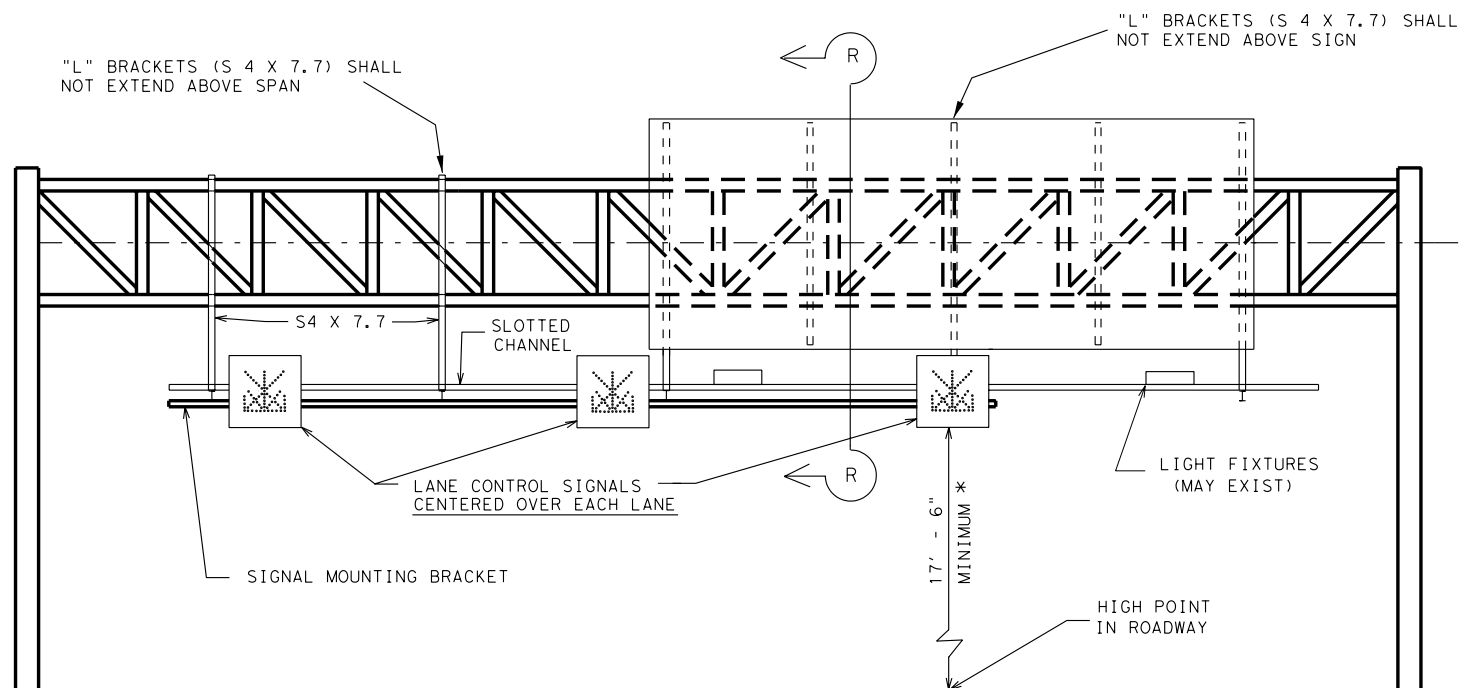
CONNECTION



DETAIL "A"

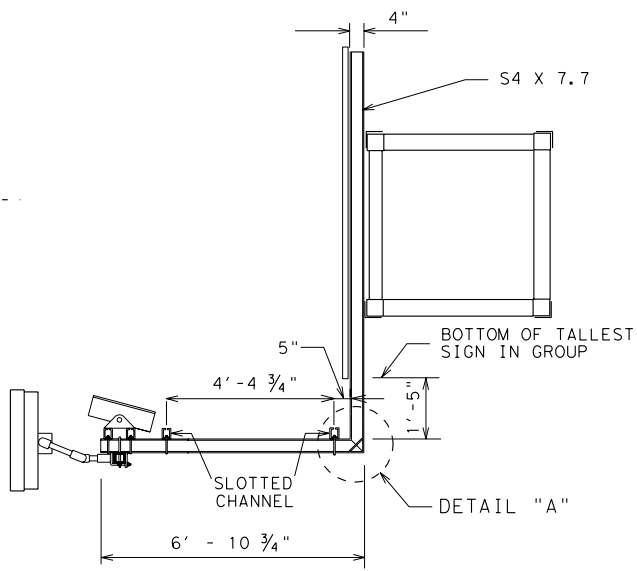


PLAN



ELEVATION

* IN NO CASE SHALL BOTTOM OF LANE CONTROL SIGNAL BE LESS THAN 17' - 6" ABOVE HIGH POINT IN ROADWAY.



SECTION R-R (ENLARGED)

GENERAL NOTES:
 DESIGN CONFORMS TO THE AASHTO STANDARD SPECIFICATIONS FOR STRUCTURAL SUPPORTS FOR HIGHWAY SIGNS, LUMINAIRES AND TRAFFIC SIGNALS.
 MATERIALS, FABRICATION, CONSTRUCTION AND ERECTION SHALL CONFORM WITH THE REQUIREMENTS OF SPECIFICATIONS FOR INTERSTATE SIGNING AND DELINEATION PROJECTS AND TEXAS DEPARTMENT OF TRANSPORTATION STANDARD SPECIFICATIONS FOR CONSTRUCTION OF HIGHWAYS, STREETS AND BRIDGES. STRUCTURAL STEEL SHALL CONFORM WITH A.S.T.M. SPECIFICATION A36 UNLESS NOTED OTHERWISE.
 BOLTS SHALL HAVE HEXAGON HEADS AND NUTS AND CONFORM WITH A.S.T.M. SPECIFICATION A307.
 ALL PARTS SHALL BE GALVANIZED AFTER FABRICATION.
 SUPPORT BRACKETS FOR THE LANE CONTROL SIGNALS SHALL BE CONSIDERED SUBSIDIARY TO SPECIAL SPECIFICATION "LANE CONTROL SYSTEM" AND NO DIRECT PAYMENT SHALL BE MADE FOR LABOR OR MATERIALS.
 ALL LCS TESTING SHALL BE DONE BETWEEN THE HOURS OF MIDNIGHT AND 5:00 AM WITH FULL CLOSURE OR AS DIRECTED BY THE ENGINEER.

LANE CONTROL SIGNAL INSTALLATION DETAILS

© 2004 Texas Department of Transportation
 SHEET 2 OF 2

FED. RD. DIV. NO.	FEDERAL AID PROJECT NO.		SHEET NO.
6			
STATE	DIST.	COUNTY	
TEXAS	15	BEXAR	
CONT.	SECT.	JOB	HIGHWAY NO.

REV. 02-25-00
 REV. 03-04-98
 REV. 12-04-98

LEVELS DISPLAYED
 1 2 3 4 5 6 7 8 9 10 11 12 13 14 15 16
 ACC: 1 2 3 4 5 6 7 8 9 10 11 12 13 14 15 16
 \$TIMES\$ \$DATES\$ \$FILE\$
 33 34 35 36 37 38 39 40 41 42 43 44 45 46 47 48
 49 50 51 52 53 54 55 56 57 58 59 60 61 62 63
 FTM: standard\lcsmtne.dgn