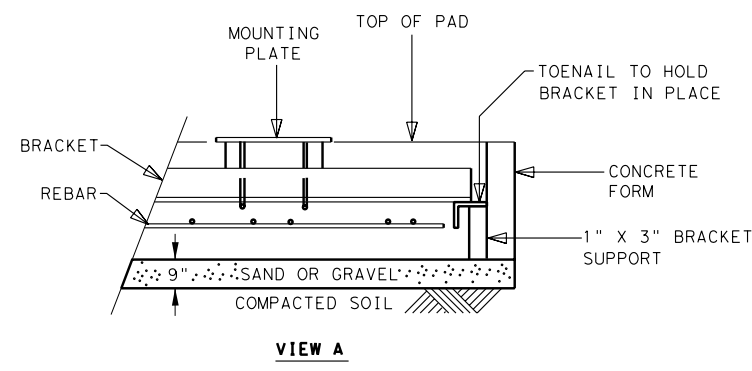
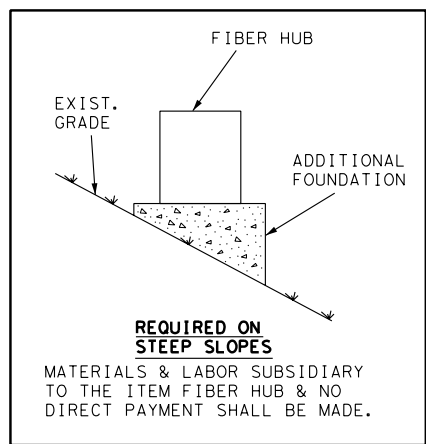


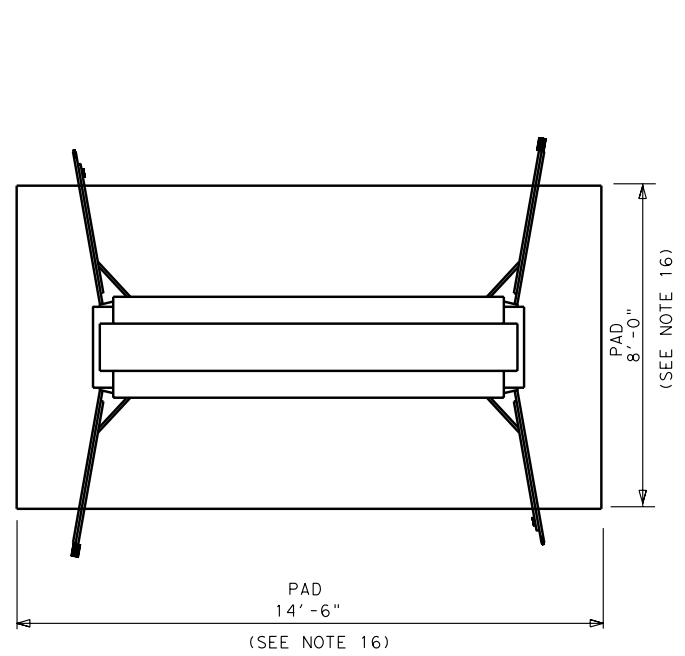
INTERNAL CABINET & PAD
(NOT TO SCALE)



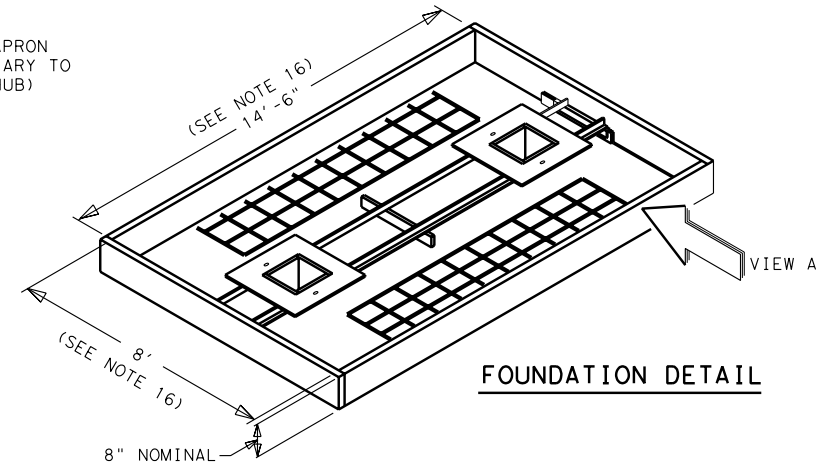
VIEW A



- NOTES:
- FIBER HUB SHALL INCLUDE BUT NOT BE LIMITED TO THE CONCRETE FOUNDATION, INTERNAL AND EXTERNAL CABINETS.
 - CONTRACTOR SHALL SUBMIT SHOP DRAWINGS, EQUIPMENT LAYOUT AND MATERIALS LIST TO THE ENGINEER FOR APPROVAL PRIOR TO ORDERING MATERIALS.
 - THE FINAL PHYSICAL LOCATION OF THE CABINET SHALL BE DETERMINED BY THE ENGINEER.
 - THE EXTERNAL CABINET SHALL HAVE FRONT, REAR, AND SIDE DOORS. IT SHALL BE CONSTRUCTED OF CLASS A REINFORCED CONCRETE. THE STRUCTURAL DESIGN SHALL HAVE SOLID CONCRETE IN THE ROOF AND 5 INCHES OF SOLID CONCRETE IN THE WALLS. FRONT, REAR AND SIDE DOORS SHALL BE CONSTRUCTED OF 1/4" STEEL PLATED WITH NON-REMOVABLE STAINLESS STEEL COMMERCIAL GRADE HINGES. THE CABINET SHALL BE PAINTED OF MATERIAL AND COLOR AS SHOWN WITHIN THE PLANS AND AS DIRECTED BY THE ENGINEER. THE ROOF SHALL HAVE 2 COATS OF AN ELASTOMERIC RUBBER BASED MATERIAL OVER THE ROOF SURFACE. PRIOR TO FABRICATION, CONTRACTOR SHALL SUBMIT COMPLETE DETAILS OF EXTERNAL CABINET TO THE ENGINEER FOR APPROVAL.
 - THE INTERNAL CABINET SHALL BE CONSTRUCTED OF HEAVY DUTY ALLUMINUM AND FINISHED WITH A BAKED ON POLYESTER FINISH. CABINET SHALL BE WEATHER, FIRE AND VANDAL RESISTANT, AND SHALL COMPLY WITH ALL PROVISIONS IN BELLCORE GR-487-CORE (TA-NWT-000487). THE CABINET SHALL BE BEIGE IN COLOR.
 - A SPECIAL HEX KEY SHALL BE USED TO OPEN THE FRONT AND REAR INTERNAL CABINET DOORS. ALL INTERNAL AND EXTERNAL DOORS SHALL BE PADLOCKED.
 - EACH CABINET SHALL HAVE AN INTRUSION ALARM FOR ALL DOORS. ALARM SHALL CONSIST OF A SWITCH INSTALLED ON EACH DOOR FOR THE PURPOSE OF DETECTING AN INTRUSION. SWITCH SHALL BE A "TELEMECANIQUE XCK-P" 3 AMP 240 VOLT OR EQUIVALENT, SECURED WITH BOLTS OR SCREWS TO CABINET FRAME. SWITCH WITH ALL ASSOCIATED WIRING SHALL BE SUBSIDIARY TO THE ITEM FIBER HUB.
 - NO VISIBLE VOIDS SHALL BE SEEN BETWEEN THE BOTTOM OF THE EXTERNAL CABINET AND THE CONCRETE FOUNDATION.
 - A 10 (TEN) POUND BAG OF FIRE ANT KILLER SHALL BE PROVIDED WITH EACH FIBER HUB.
 - CONTRACTOR SHALL DRY PACK UNDER EXTERNAL CABINET TO PREVENT VOIDS AND ROCKING OF THE CABINET AS DIRECTED BY THE ENGINEER.
 - A TY-A MANHOLE SHALL BE INSTALLED ALONG THE LEFT SIDE OF THE FIBER HUB FOUNDATION, PAID FOR UNDER ITEM 465 "MANHOLES AND INLETS".
 - A TY-A GROUND BOX SHALL BE INSTALLED ALONG THE RIGHT SIDE OF THE FIBER HUB FOUNDATION. GROUND BOX SHALL BE PAID FOR UNDER ITEM 624 "GROUND BOXES".
 - ALL DIMENSIONS ARE APPROXIMATE. FINAL DIMENSIONS SHALL BE AS APPROVED BY THE ENGINEER.
 - FIBER HUB SHALL NOT BE PLACED IN DITCHES, LOW AREAS, ETC. WHERE WATER MAY ENTER HUB.
 - ANY MODIFICATIONS (E.G. EXTRA CONCRETE) TO FIBER HUB PAD DUE TO SLOPES OR CHANGE IN GRADE SHALL BE CONSIDERED SUBSIDIARY TO THE ITEM "FIBER HUB" AND NO DIRECT PAYMENT SHALL BE MADE.
 - DIMENSIONS SHOWN DEPICT MINIMUM SIZE OF CABINET & PAD REQUIRED FOR ACCOMODATING EQUIPMENT. PAD SHALL EXTEND A MINIMUM OF 3' PAST OUTSIDE WALLS OF FIBER HUB ON ALL 4 SIDES. ANY INCREASE IN SIZE OF INTERNAL CABINET MAY NECESSITATE AN INCREASE IN THE SIZE OF THE EXTERNAL CABINET. COSTS ASSOCIATED WITH INCREASE IN SIZE OF INTERNAL OR EXTERNAL CABINET OR PAD SHALL BE CONSIDERED SUBSIDIARY TO THE ITEM FIBER HUB AND NO DIRECT PAYMENT SHALL BE MADE.



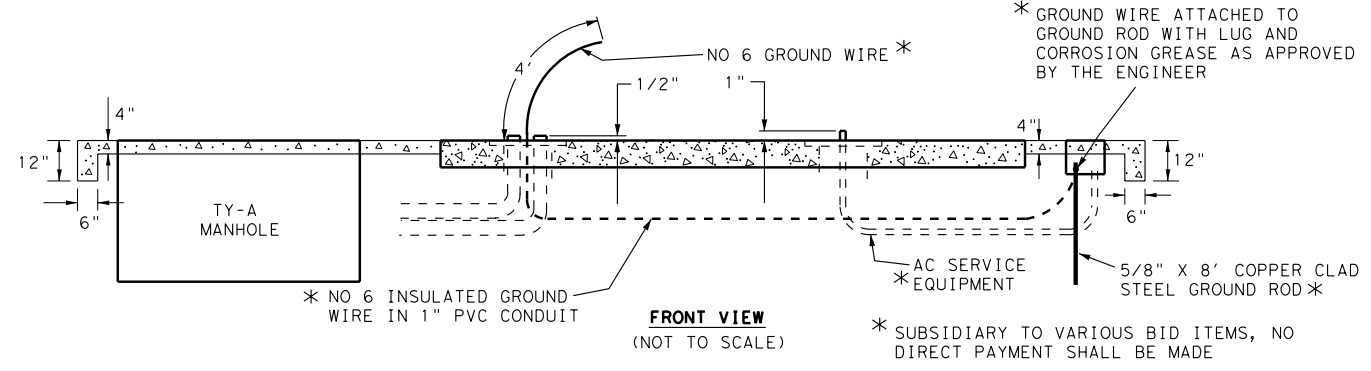
TOP VIEW
(NOT TO SCALE)



FOUNDATION DETAIL

NOTE: DOORS EXTEND BEYOND PAD SURFACE

INTERNAL CABINET
TOP VIEW
(NOT TO SCALE)



FRONT VIEW
(NOT TO SCALE)

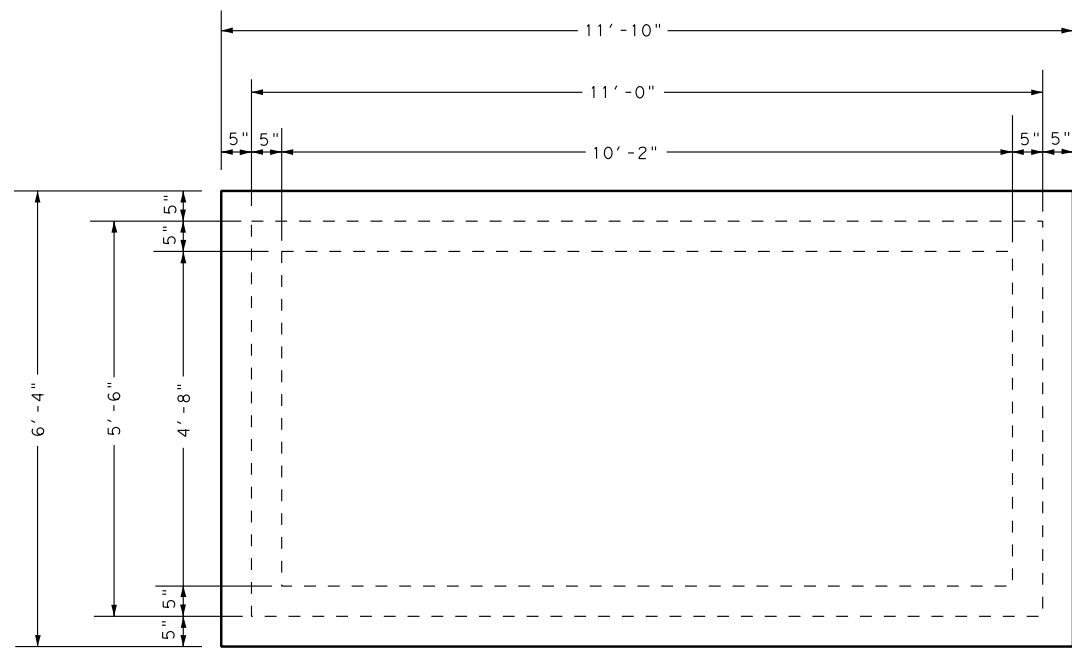
LEVELS DISPLAYED
1 2 3 4 5 6 7 8 9 10 11 12 13 14 15 16
ACC: \$TTIME\$ \$DATES\$ \$FILE\$.DGN
FTW: \standard\TrHub3.dgn

FIBER HUB DETAILS
(TY-A MANHOLE NOT SUBSIDIARY)

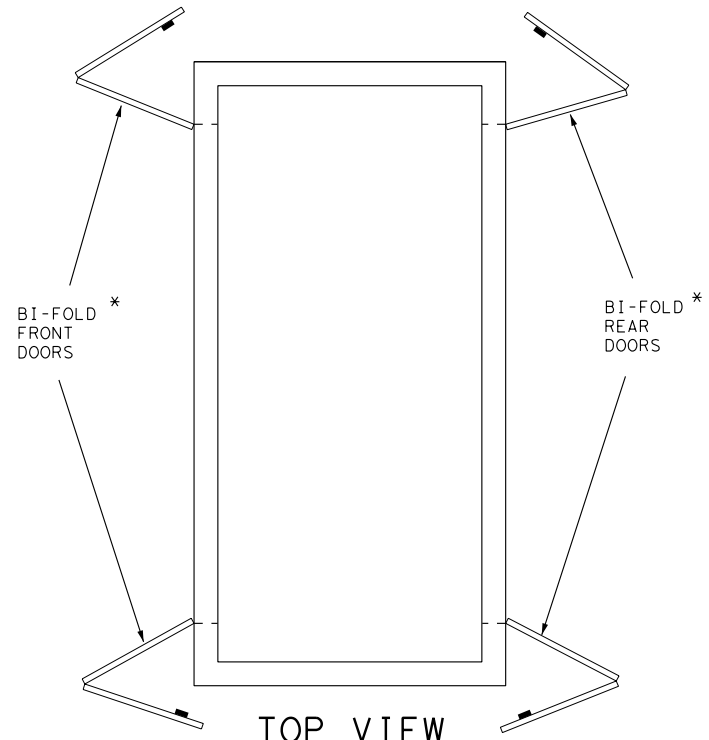
© 2004 Texas Department of Transportation
SHEET 1 OF 2

FED. RD. DIV. NO.	FEDERAL AID PROJECT NO.	SHEET NO.
6		
STATE	DIST.	COUNTY
TEXAS	15	BEXAR
CONT.	SECT.	JOB
		HIGHWAY NO.

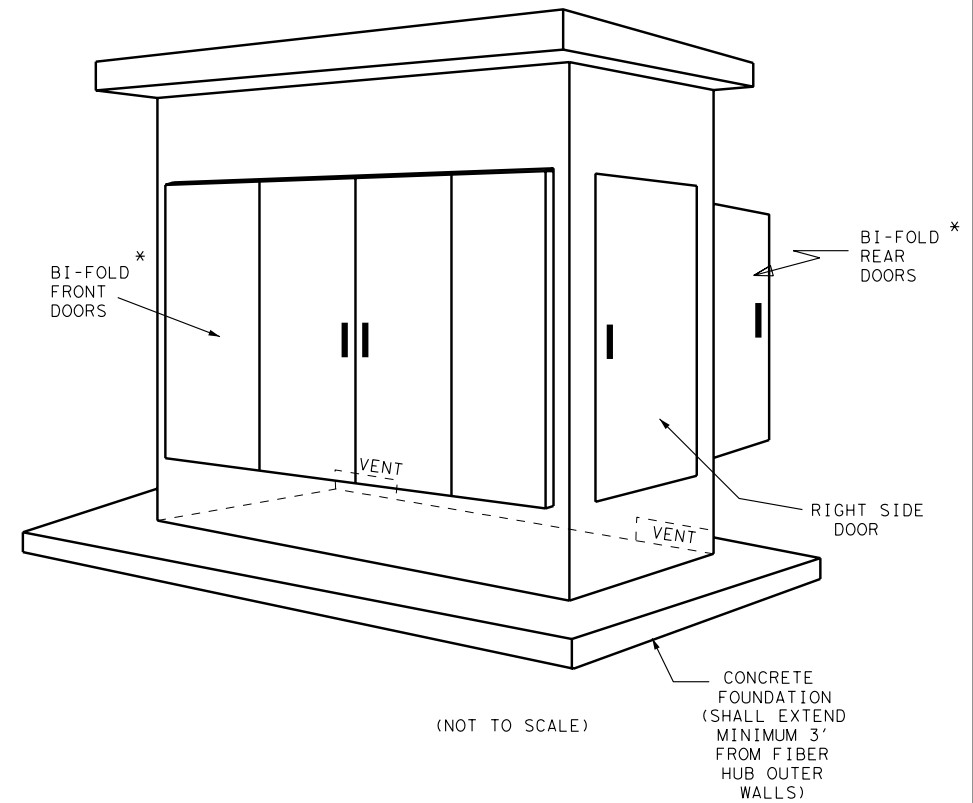
12-13-02
12-5-01
10-1-01
7-11-00
5-16-00
6-25-98
REVISED 3-12-98



ROOF VIEW
(NOT TO SCALE)

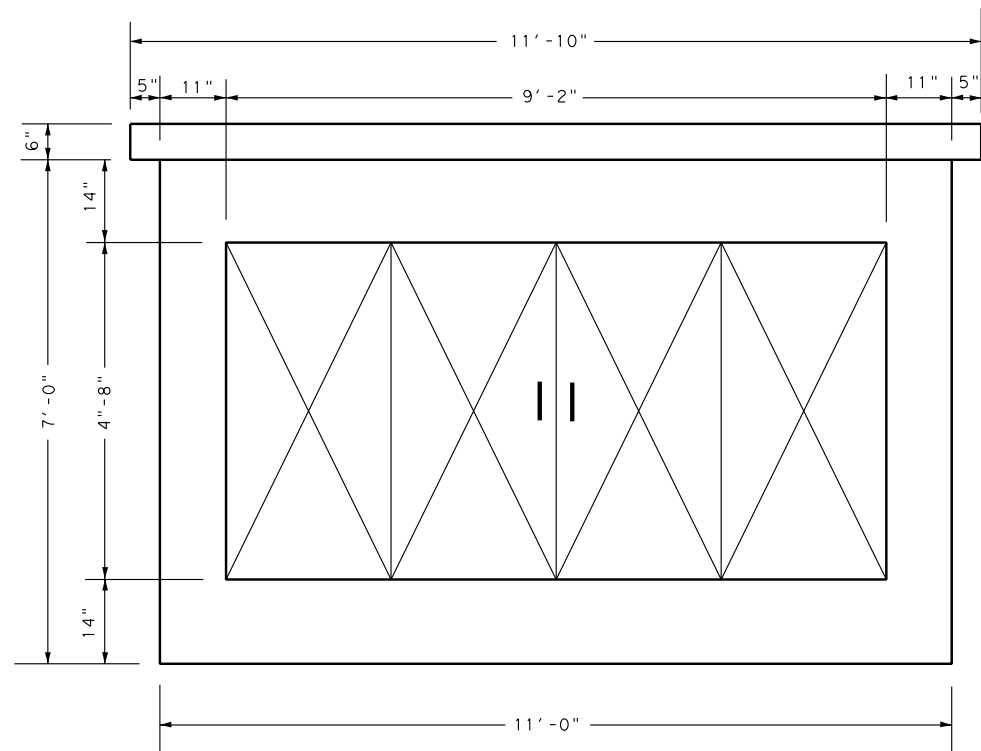


TOP VIEW
SHOWING BI-FOLD FRONT AND REAR DOOR OPENING PATTERN *
(NOT TO SCALE)

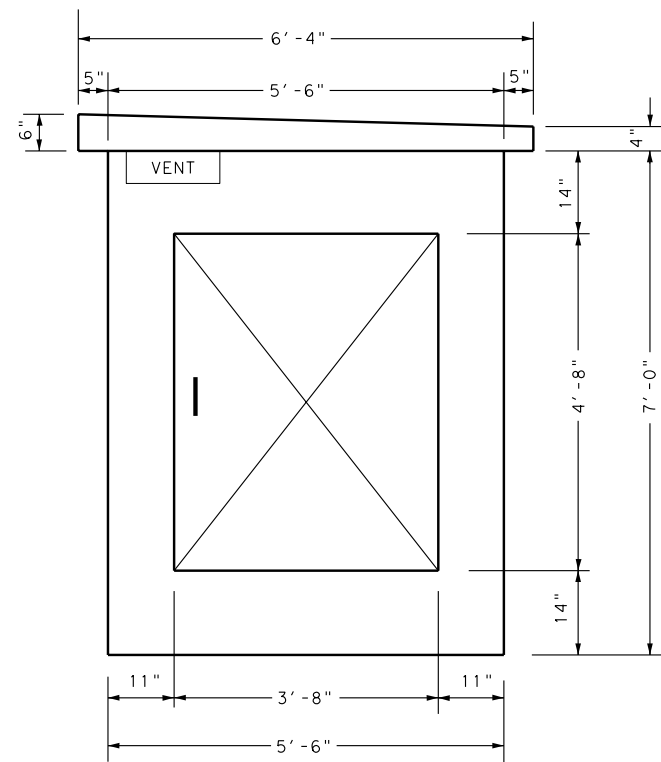


(NOT TO SCALE)

* BI-FOLD DOORS ARE REQUIRED ONLY AT LOCATIONS WITH LIMITED OPENING CLEARANCE, AS DIRECTED BY THE ENGINEER.



FRONT VIEW
(NOT TO SCALE)



RIGHT SIDE VIEW
(NOT TO SCALE)

EXTERNAL CABINET

FIBER HUB DETAILS
(EXTERNAL CABINET DETAILS)
SHEET 2 OF 2

© 2004 Texas Department of Transportation

FED. RD. DIV. NO.	FEDERAL AID PROJECT NO.		SHEET NO.
6			
STATE	DIST.	COUNTY	
TEXAS	15	BEXAR	
CONT.	SECT.	JOB	HIGHWAY NO.

12-5-01
6-4-01
REVISED 10-29-98
REVISED 03-12-98

LEVELS DISPLAYED
1 2 3 4 5 6 7 8 9 10 11 12 13 14 15 16 17 18 19 20 21 22 23 24 25 26 27 28 29 30 31 32 33 34 35 36 37 38 39 40 41 42 43 44 45 46 47 48 49 50 51 52 53 54 55 56 57 58 59 60 61 62 63
ACC: \$ TIME \$ \$ DATE \$ \$ FILE \$
F:\standard\trhub3.dgn