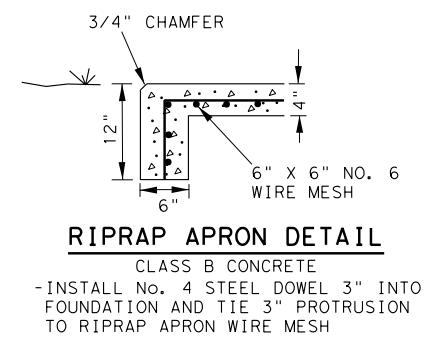


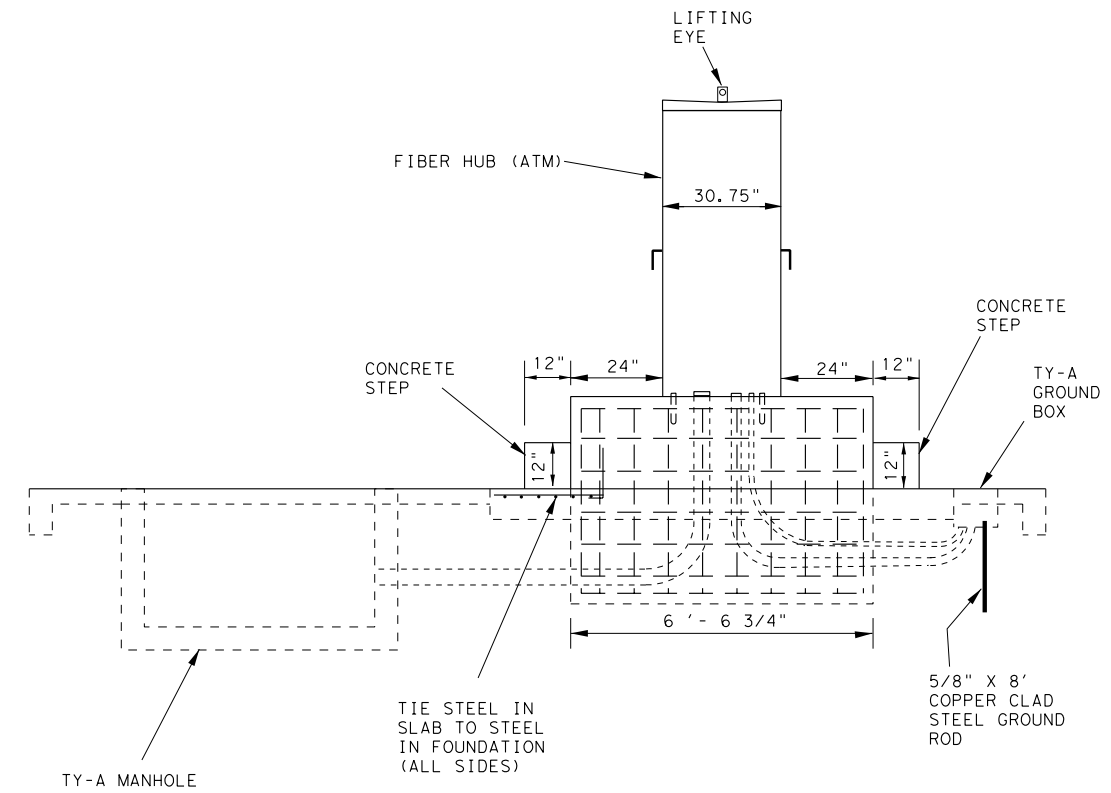
PLAN VIEW



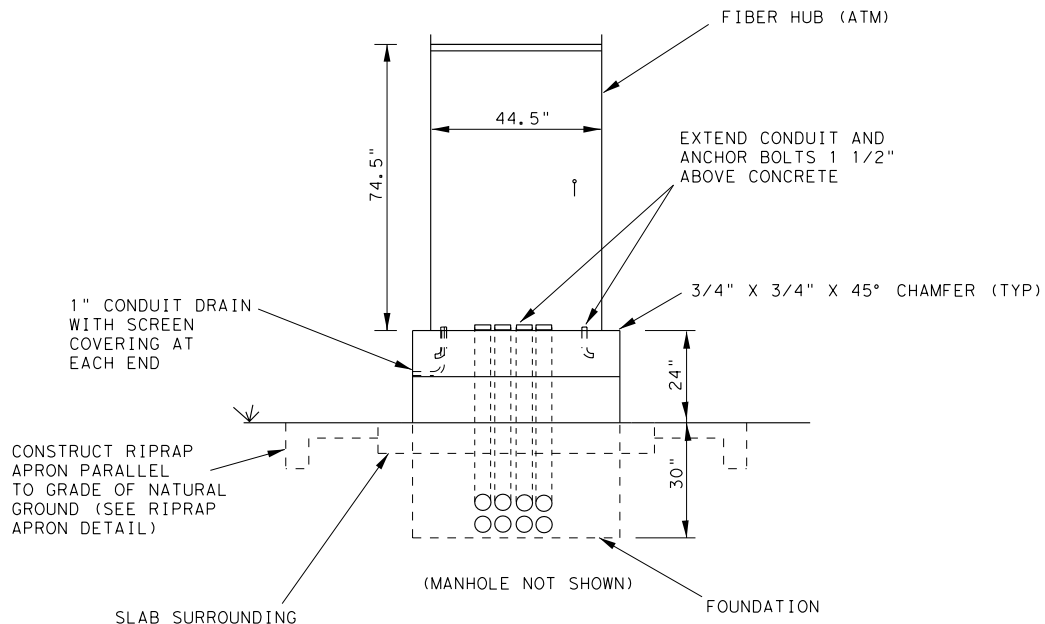
RIPRAP APRON DETAIL

NOTES:

1. USE CLASS A CONCRETE FOR ALL STRUCTURES EXCEPT RIPRAP APRON.
2. FURNISH ADDITIONAL CONCRETE IF NECESSARY TO STABILIZE FOUNDATION AT UNUSUAL LOCATIONS, OR BECAUSE OF SLOPES OR CHANGES IN GRADE AT INSTALLATION SITE, SUBSIDIARY TO THIS ITEM.
3. AT LOCATIONS WHERE FIBER HUB IS IN CLOSE PROXIMITY TO OTHER TMS CABINETS, CONSTRUCT ONE COMMON RIPRAP APRON AROUND ALL CABINETS, SUBSIDIARY TO THIS ITEM.
4. CONCRETE SLAB, RIPRAP APRON, STEPS, AND CONDUIT FROM MANHOLE AND GROUND BOX TO FIBER HUB ARE SUBSIDIARY TO THIS ITEM.
5. TY-A GROUND BOX WILL BE PAID FOR UNDER ITEM 624, "GROUND BOXES".
6. TY-A MANHOLE WILL BE PAID FOR UNDER ITEM 465, "MANHOLES AND INLETS".
7. DO NOT PLACE FIBER HUBS IN DITCHES, LOW AREAS, ETC. WHERE WATER MAY ENTER STRUCTURE.
8. SUBMIT SHOP DRAWING, EQUIPMENT LAYOUT AND MATERIALS LIST TO THE ENGINEER FOR APPROVAL PRIOR TO ORDERING MATERIALS.
9. PROVIDE A 10 POUND BAG OF FIRE ANT KILLER WITH EACH FIBER HUB.
10. SEE SPECIAL SPECIFICATION "FIBER HUB (ATM)" FOR ADDITIONAL DETAILS.



SIDE ELEVATION



FRONT ELEVATION

FIBER HUB (ATM) DETAILS

© 2004 Texas Department of Transportation

LEVELS DISPLAYED	ACC:
1 2 3 4 5 6 7 8 9 10 11 12 13 14 15 16 17 18 19 20 21 22 23 24 25 26 27 28 29 30 31 32 33 34 35 36 37 38 39 40 41 42 43 44 45 46 47 48 49 50 51 52 53 54 55 56 57 58 59 60 61 62 63 64 65 66 67 68 69 70 71 72 73 74 75 76 77 78 79 80 81 82 83 84 85 86 87 88 89 90 91 92 93 94 95 96 97 98 99 100	\$ TIME \$ \$ DATE \$ \$ FILE \$
FILE: .DGN	

FED. RD. DIV. NO.	FEDERAL AID PROJECT NO.	SHEET NO.
6		
STATE	DIST.	COUNTY
TEXAS	SAT	BEXAR
CONT.	SECT.	JOB
		HIGHWAY NO.