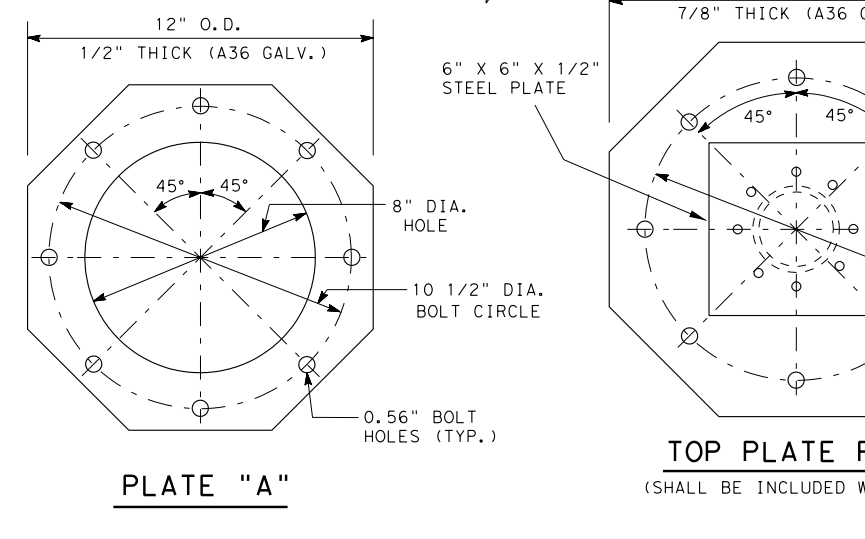
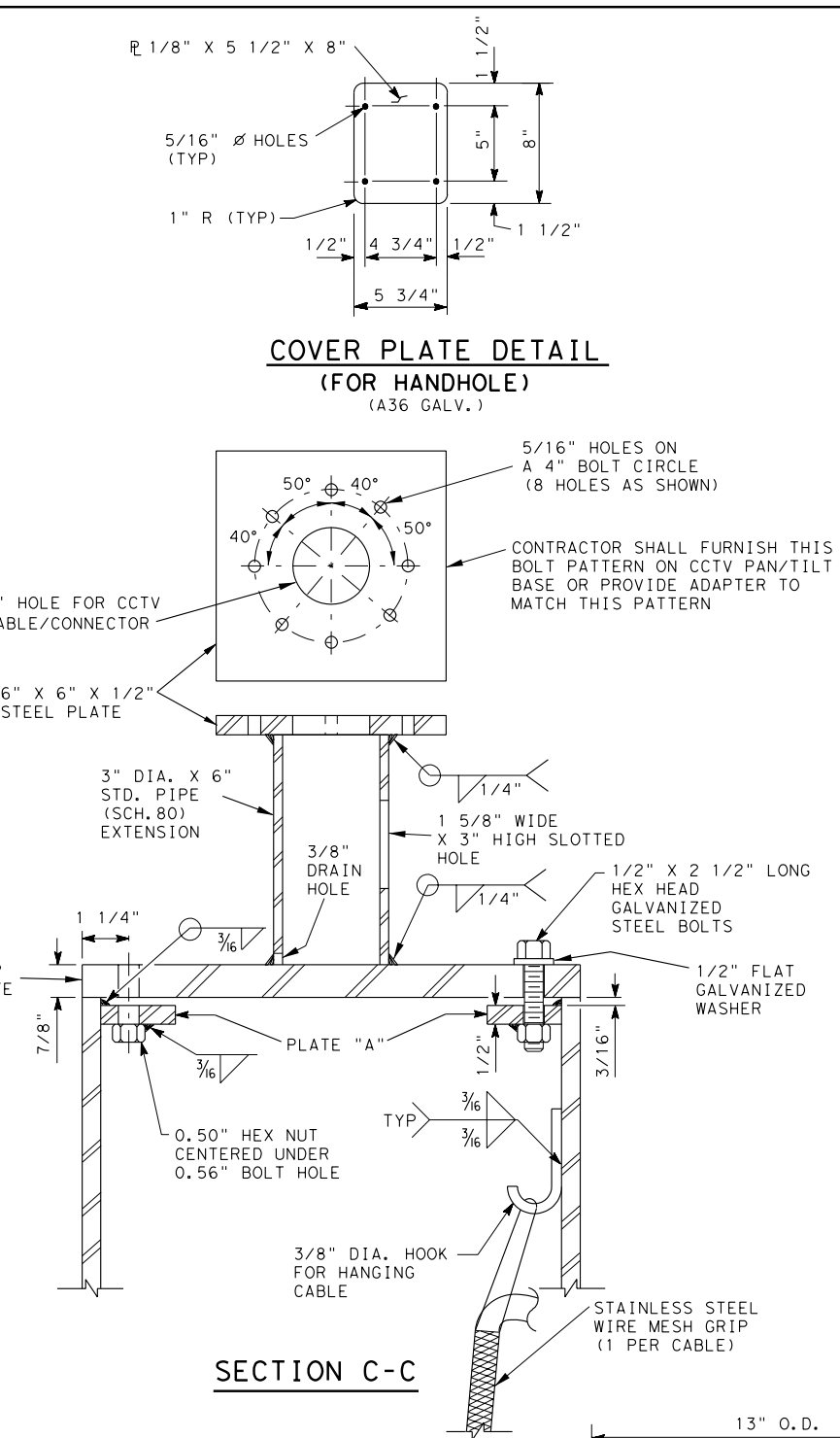
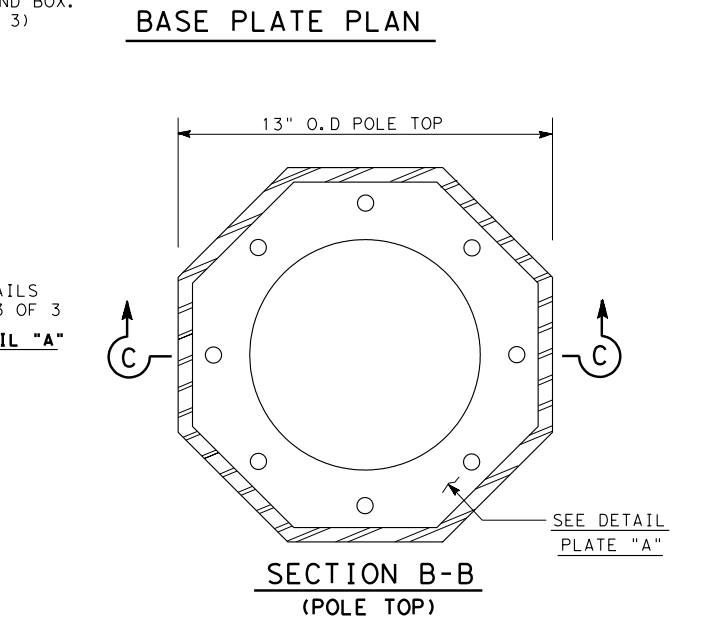
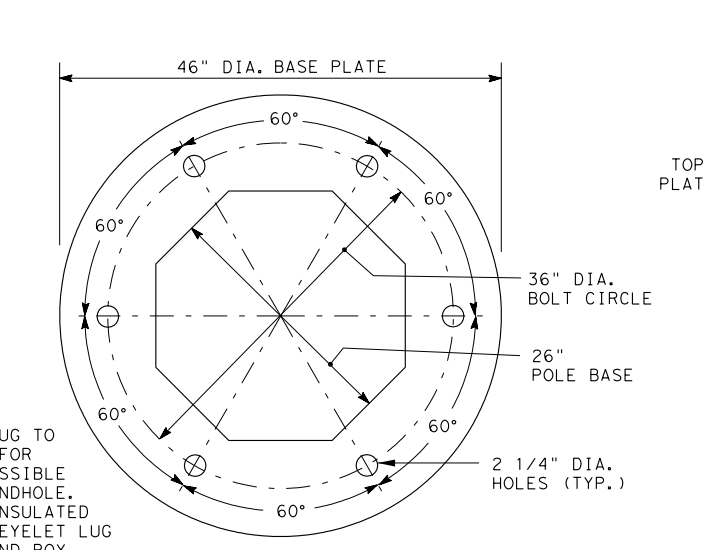
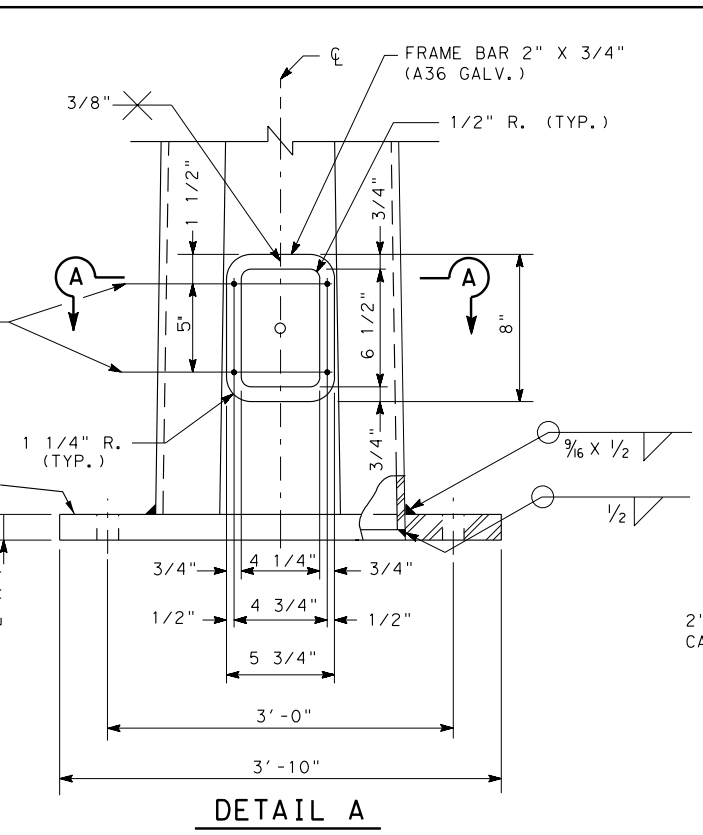
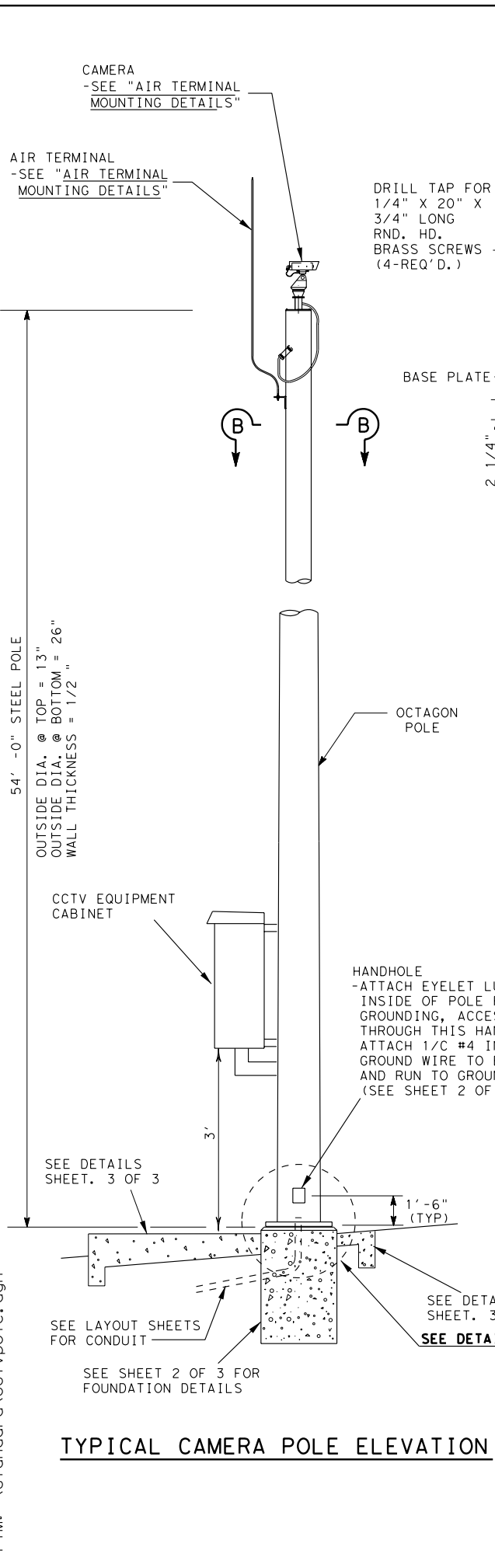
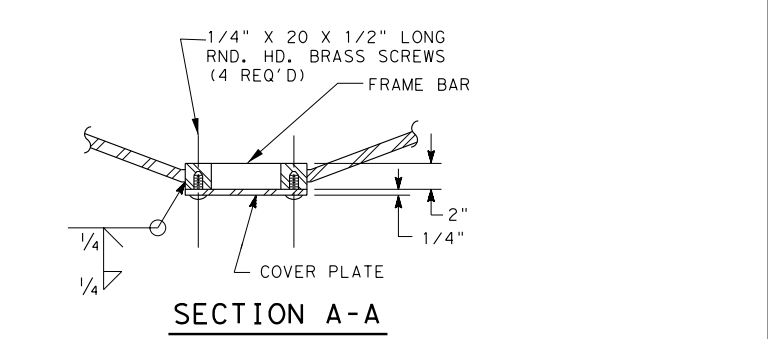


LEVELS DISPLAYED
 1 2 3 4
 5 6 7 8 9 10 11 12 13 14 15 16
 17 18 19 20 21 22 23 24 25 26 27 28 29 30 31 32
 33 34 35 36 37 38 39 40 41 42 43 44 45 46 47 48
 49 50 51 52 53 54 55 56 57 58 59 60 61 62 63
 ACC: \$TIME\$ \$DATE\$ \$FILE\$
 .DGN
 FTM: \standard\cctv\pole.dgn



NOTES:
 DESIGN CONFORMS TO 1975 AASHTO STANDARD SPECIFICATIONS FOR STRUCTURAL SUPPORTS FOR HIGHWAY SIGNS, LUMINAIRES, AND TRAFFIC SIGNALS.
 STRUCTURAL STEEL FOR THE POLE SHALL CONFORM TO ASTM A595 GR A OR ASTM 570 GR50 OR ASTM A607 GR50 OR ASTM A572 GR50 OR A36M50.
 STRUCTURAL STEEL FOR PLATES SHALL CONFORM TO ASTM A36 OR A572 GR50 OR A595 GR A OR A36M5D.
 FABRICATION AND WELDING OF STRUCTURES SHALL BE IN ACCORDANCE WITH ITEM "STEEL STRUCTURES". THE FABRICATOR SHALL SUBMIT PROPOSED WELDING PROCEDURES WITH THE SHOP DRAWINGS. THE SHOP DRAWINGS, WHEN SUBMITTED, SHALL INCLUDE THE WELDING PROCEDURE NUMBER ASSIGNED BY THE DIVISION OF MATERIALS AND TEST OF THE TEXAS DEPARTMENT OF TRANSPORTATION. THIS WELDING PROCEDURE NUMBER SHALL BE PLACED ADJACENT TO THE APPROPRIATE WELDING SYMBOL.
 UNLESS OTHERWISE NOTED, ALL PARTS SHALL BE GALVANIZED IN ACCORDANCE WITH THE SPECIFICATIONS. REINFORCING STEEL SHALL CONFORM TO ITEM 440. ALL REINFORCING STEEL SHALL BE MINIMUM GRADE 60. CONCRETE SHALL BE CLASS C.
 THE CONTRACTOR SHALL CLEAN ALL ABRASIONS AND FIELD WELDS WITH A WIRE BRUSH AND SHALL APPLY TWO COATS OF ZINC RICH PAINT TO THE UNGALVANIZED AREAS OF THE STRUCTURE. THE CONTRACTOR SHALL HANG ALL CABLING INSIDE CAMERA POLE STRUCTURE WITH STAINLESS STEEL WIRE MESH GRIPS.
 BOLT POSITIONING FOR THE PAN/TILT BASE WILL BE DETERMINED IN THE FIELD. THIS WILL ALLOW POSITIONING OF THE LIMIT SWITCH SO THAT THE CAMERA BLIND ZONE IS PROPERLY LOCATED. THE ENGINEER WILL DETERMINE THE CAMERA'S BLIND ZONE AT EACH LOCATION.
 THE CONTRACTOR SHALL FURNISH ALL MATERIALS NECESSARY TO INSTALL THE C.C.T.V. CAMERA POLE. SUCH WORK SHALL BE PAID FOR UNDER THE ITEM "CAMERA POLE STRUCTURES."
 COAXIAL CABLE BETWEEN THE CAMERA AND THE FIBER HUB OR CCTV CABINET SHALL BE OF THE RG-59 TYPE WITH A 100% COPPER STRANDED CENTER CONDUCTOR. ALL COAXIAL CABLE SHALL HAVE A CELLULAR POLYETHYLENE DIELECTRIC JACKET WITH MINIMUM 90% SHIELDING (BELDEN 8218 OR BETTER). THE CABLE SHALL ALSO PROVIDE VIDEO, 120VAC, AND RS422 COMMUNICATIONS TO A 16 PIN AMP CONNECTOR, AMP 206037-1 (1310307-009) AND AMP 206044-1 (1310307-103). CABLE ASSIGNMENTS ARE: TXD POSITIVE PIN 5 RED #26, TXD NEGATIVE PIN 4 GRN #26, RXD NEGATIVE PIN 7 BLK #26, RXD PIN 6 WHT #26, DATA GRND PIN 3 BLU #22, VIDEO OUT PIN 1, VIDEO SHLD PIN 2, 115 VAC CAM PWR HI PIN 12 BLK, 115 VAC CAM PWR LO PIN 13 WHT, AC GN PIN 15 GRN, SHIELD PIN 14. GAUGE IS DEPENDENT ON LENGTH OF CABLE.



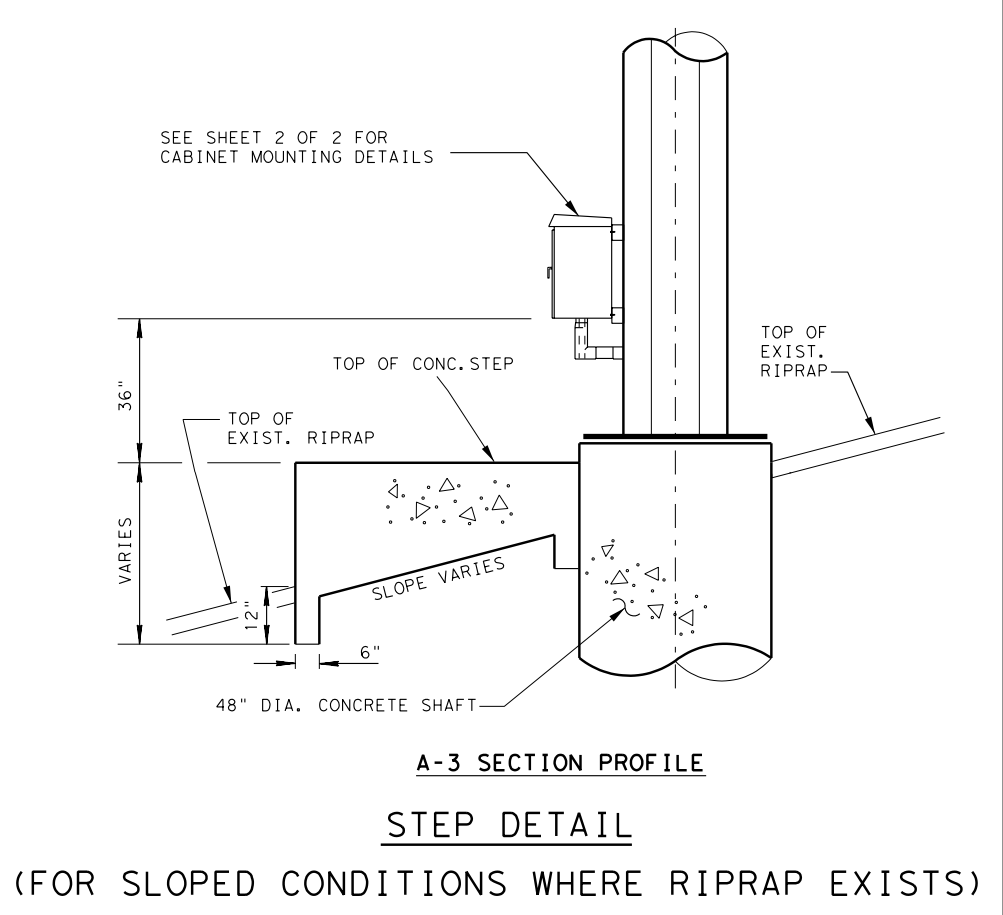
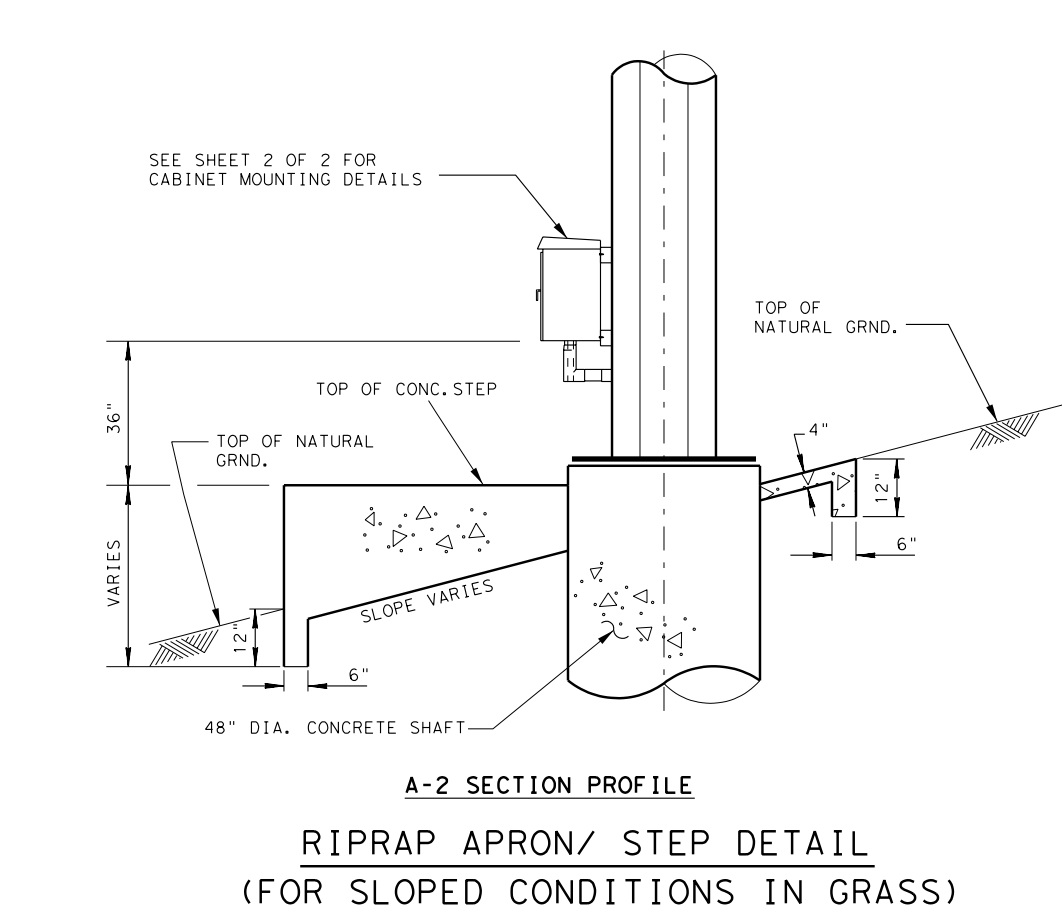
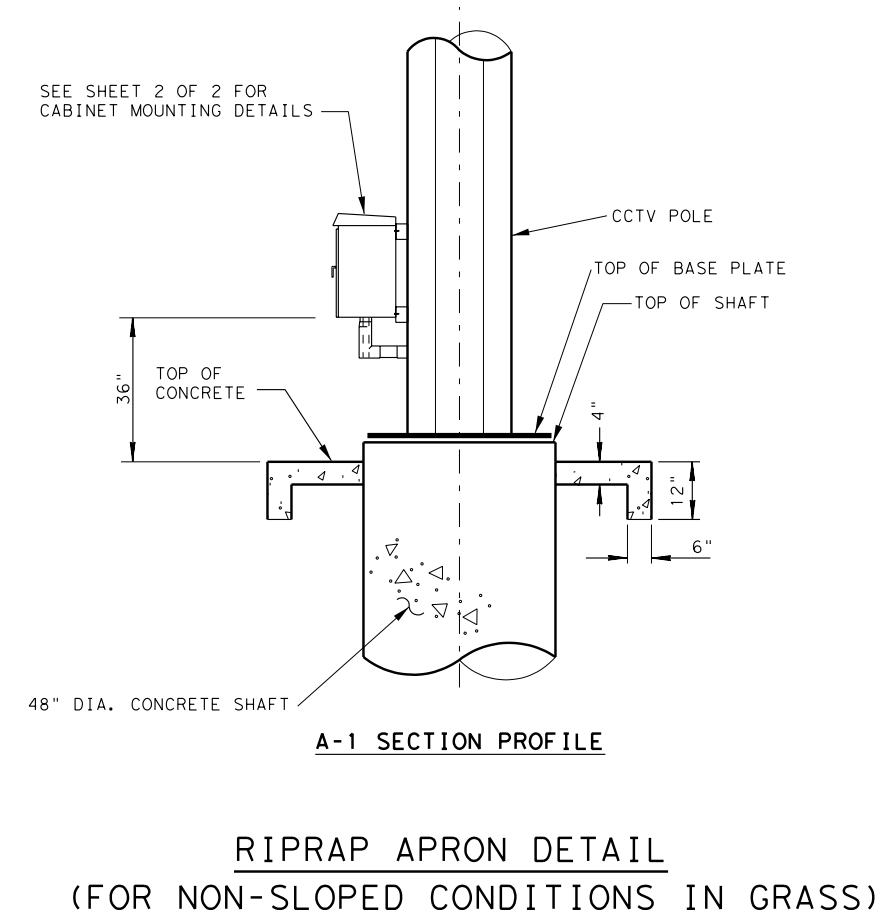
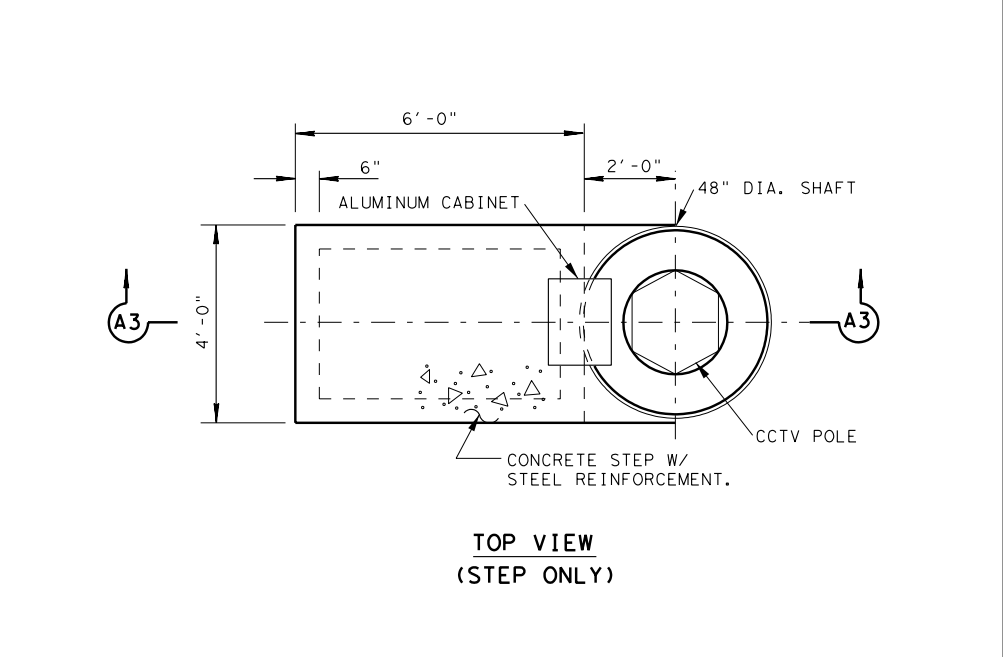
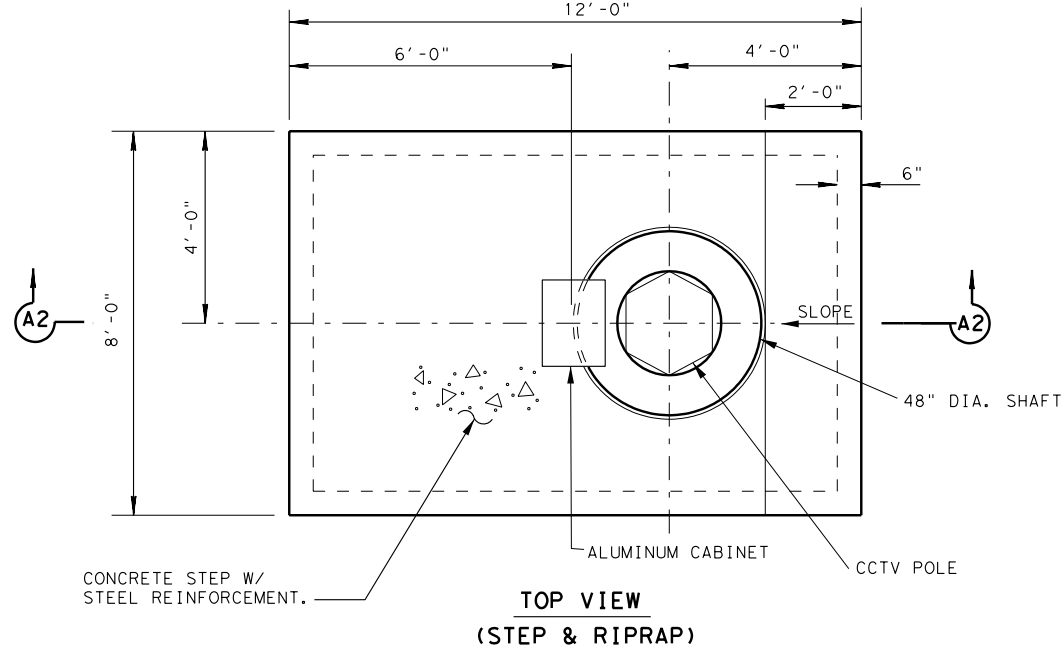
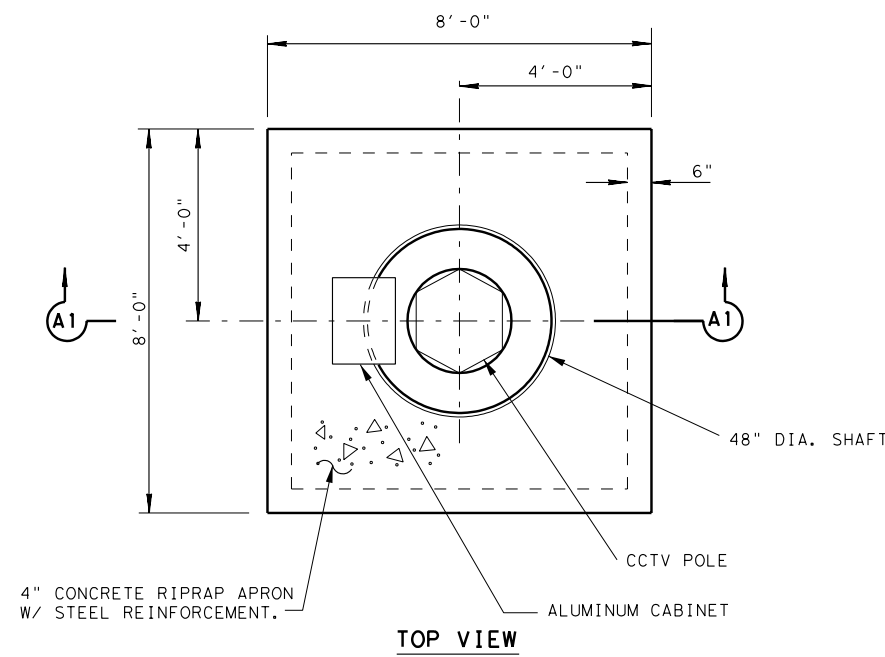
CCTV CAMERA POLE DETAILS

© 2004 Texas Department of Transportation

SHEET 1 OF 3

FED. RD. DIV. NO.	FEDERAL AID PROJECT NO.	SHEET NO.
6	NH 2002 (683)	
STATE	DIST.	COUNTY
	SAT	BEXAR
CONT.	SECT.	JOB
		HIGHWAY NO.

REV. 03-11-04



LEVELS DISPLAYED

1 2 3 4 5 6 7 8 9 10 11 12 13 14 15 16 17 18 19 20 21 22 23 24 25 26 27 28 29 30 31 32 33 34 35 36 37 38 39 40 41 42 43 44 45 46 47 48 49 50 51 52 53 54 55 56 57 58 59 60 61 62 63 64 65 66 67 68 69 70 71 72 73 74 75 76 77 78 79 80 81 82 83 84 85 86 87 88 89 90 91 92 93 94 95 96 97 98 99 100

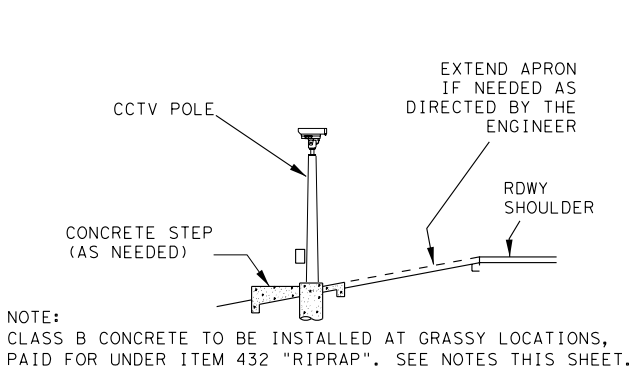
ACC:

\$TIME\$

\$DATE\$

\$FILE\$

FILE: .DGN



- NOTES:
1. FOR NON-SLOPED GRASSY AREAS, AN 8' X 8' CONCRETE RIPRAP APRON SHALL BE POURED AROUND CCTV POLE FOUNDATION (SEE DETAIL THIS SHEET), ESTIMATED AT 1.25 CU YDS PER SITE, PAID FOR UNDER ITEM 432 "RIPRAP".
 2. FOR SLOPED GRASSY AREAS, A CONCRETE "STEP" (FOR MAINTENANCE PERSONNEL TO ACCESS ALUMINUM CABINET) SHALL BE POURED AS PART OF THE RIPRAP APRON. THE STEP SHALL VARY IN HEIGHT DEPENDING ON SLOPE, BUT SHALL EXTEND 6' HORIZONTALLY FROM CCTV POLE DRILLED SHAFT FOUNDATION AND BE THE SAME WIDTH AS RIPRAP APRON (8'). STEP SHALL BE POURED AT SAME TIME AS RIPRAP (SEE DETAIL THIS SHEET). ANY ADDITIONAL CONCRETE NECESSARY TO FABRICATE STEP (OVER AND ABOVE THE 1.25 CU YDS) SHALL BE CONSIDERED SUBSIDIARY TO THE VARIOUS BID ITEMS AND NO DIRECT PAYMENT SHALL BE MADE.
 3. FOR SLOPED AREAS WHERE RIPRAP EXISTS, A 6' (HORIZONTAL FROM DRILLED SHAFT FOUNDATION) X 4' WIDE STEP SHALL BE INSTALLED (SEE DETAIL THIS SHEET). CONCRETE FOR STEP SHALL BE CONSIDERED SUBSIDIARY TO THE VARIOUS BID ITEMS AND NO DIRECT PAYMENT SHALL BE MADE.

CCTV CAMERA POLE DETAILS
SHEET 3 OF 3



FED. RD. DIV. NO.	FEDERAL AID PROJECT NO.	SHEET NO.
6	NH 2002 (683)	
STATE	DIST.	COUNTY
TEXAS	SAT	BEXAR
CONT.	SECT.	JOB
		HIGHWAY NO.

10-01-02

PLAN